

Cleaved-MMP-12 (G106) Polyclonal Antibody

Description

| | |
|--------------------------------|--|
| Product type | Primary Antibody |
| Code | BT-AP01945 |
| Host | Rabbit |
| Isotype | IgG |
| Size | 20ul, 50ul, 100ul |
| Immunogen | The antiserum was produced against synthesized peptide derived from human MMP12. AA range:87-136 |
| Mol wt | 54002 |
| Species reactivity | Human |
| Clonality | Polyclonal |
| Recommended application | WB, ELISA |
| Concentration | 1 mg/ml |
| Full name | Cleaved-MMP-12 (G106) Antibody |
| Synonyms | MMP12; HME; Macrophage metalloelastase; MME; Macrophage elastase; ME; hME; Matrix metalloproteinase-12; MMP-12 |

This product is for research use only, not for use in human, therapeutic or diagnostic procedure.

Background

MMP12 encodes a member of the peptidase M10 family of matrix metalloproteinases (MMPs). Proteins in this family are involved in the breakdown of extracellular matrix in normal physiological processes, such as embryonic development, reproduction, and tissue remodeling, as well as in disease processes, such as arthritis and metastasis. The encoded preproprotein is proteolytically processed to generate the mature protease. Matrix metalloproteinase 12 degrades soluble and insoluble elastin. MMP12 may play a role in aneurysm formation and mutations MMP12 are associated with lung function and chronic obstructive pulmonary disease (COPD). MMP12 is part of a cluster of MMP genes on chromosome 11.

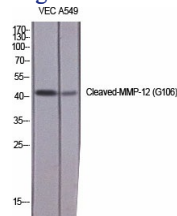
Recommended Dilution

WB: 1: 500 - 1: 2000

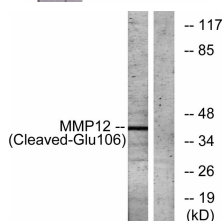
ELISA: 1: 20000

Not yet tested in other applications.

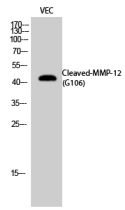
Images



Western Blot analysis of various cells using Cleaved-MMP-12 (G106) Polyclonal Antibody diluted at 1:1000



Western blot analysis of lysates from NIH/3T3 cells, treated with etoposide 25uM 1h, using MMP12 (Cleaved-Glu106) Antibody. The lane on the right is blocked with the synthesized peptide.



Western Blot analysis of VEC cells using Cleaved-MMP-12 (G106) Polyclonal Antibody diluted at 1:1000

Storage

-20°C for one year

501 Changsheng S Rd, Nanhu Dist, Jiaxing, Zhejiang, China

Tel: 86 21 31007137 | E-mail: save@bt-laboratory.com | www.bt-laboratory.com