

Cleaved-MMP-27 (Y99) Polyclonal Antibody

Description

Product type	Primary Antibody
Code	BT-AP01950
Host	Rabbit
Isotype	IgG
Size	20ul, 50ul, 100ul
Immunogen	The antiserum was produced against synthesized peptide derived from human MMP27. AA range:80-129
Mol wt	59024
Species reactivity	Human, Monkey
Clonality	Polyclonal
Recommended application	WB, ELISA
Concentration	1 mg/ml
Full name	Cleaved-MMP-27 (Y99) Antibody
Synonyms	MMP27; Matrix metalloproteinase-27; MMP-27

This product is for research use only, not for use in human, therapeutic or diagnostic procedure.

Background

Proteins of the matrix metalloproteinase (MMP) family are involved in the breakdown of extracellular matrix in normal physiological processes, such as embryonic development, reproduction, and tissue remodeling, as well as in disease processes, such as arthritis and metastasis. Most MMP's are secreted as inactive proproteins which are activated when cleaved by extracellular proteinases.

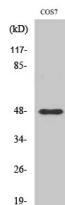
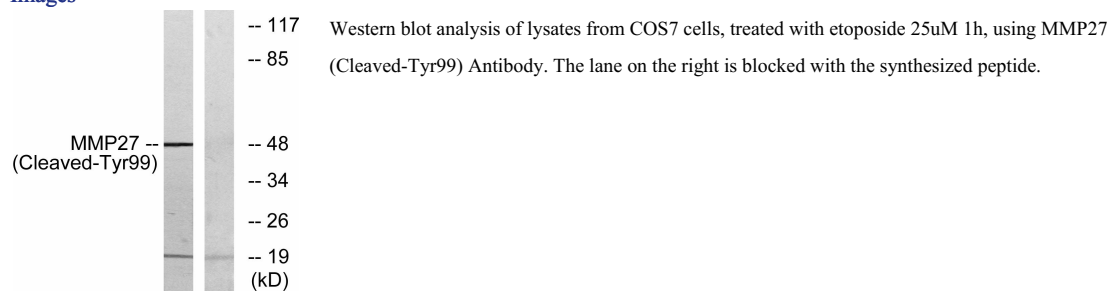
Recommended Dilution

WB: 1: 500 - 1: 2000

ELISA: 1: 10000

Not yet tested in other applications.

Images



Western Blot analysis of various cells using Cleaved-MMP-27 (Y99) Polyclonal Antibody

Storage

-20°C for one year

501 Changsheng S Rd, Nanhu Dist, Jiaxing, Zhejiang, China

Tel: 86 21 31007137 | E-mail: save@bt-laboratory.com | www.bt-laboratory.com