

## Cleaved-Notch 4 (V1432) Polyclonal Antibody

### Description

<b>Product type</b>	Primary Antibody
<b>Code</b>	BT-AP01957
<b>Host</b>	Rabbit
<b>Isotype</b>	IgG
<b>Size</b>	20ul, 50ul, 100ul
<b>Immunogen</b>	The antiserum was produced against synthesized peptide derived from human NOTCH4. AA range:1401-1450
<b>Mol wt</b>	209622
<b>Species reactivity</b>	Human, Monkey
<b>Clonality</b>	Polyclonal
<b>Recommended application</b>	WB, ELISA
<b>Concentration</b>	1 mg/ml
<b>Full name</b>	Cleaved-Notch 4 (V1432) Antibody
<b>Synonyms</b>	NOTCH4; INT3; Neurogenic locus notch homolog protein 4; Notch 4; hNotch4

**This product is for research use only, not for use in human, therapeutic or diagnostic procedure.**

### Background

NOTCH4 encodes a member of the NOTCH family of proteins. Members of this Type I transmembrane protein family share structural characteristics including an extracellular domain consisting of multiple epidermal growth factor-like (EGF) repeats, and an intracellular domain consisting of multiple different domain types. Notch signaling is an evolutionarily conserved intercellular signaling pathway that regulates interactions between physically adjacent cells through binding of Notch family receptors to their cognate ligands. The encoded preproprotein is proteolytically processed in the trans-Golgi network to generate two polypeptide chains that heterodimerize to form the mature cell-surface receptor. This receptor may play a role in vascular, renal and hepatic development. Mutations in NOTCH4 may be associated with schizophrenia. Alternative splicing results in multiple transcript variants, at least one of which encodes an isoform that is proteolytically processed.

### Recommended Dilution

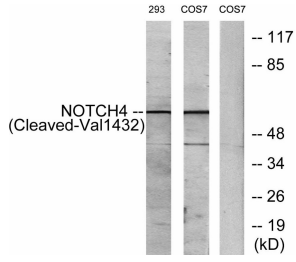
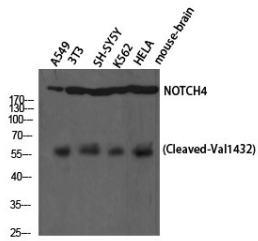
WB: 1: 500 - 1: 2000

ELISA: 1: 5000

Not yet tested in other applications.

### Images

Western Blot analysis of A549 NIH-3T3 SH-SY5Y K562 HELA cells using Cleaved-Notch 4 (V1432) Polyclonal Antibody diluted at 1:1000



Western blot analysis of lysates from 293 and COS7 cells, treated with etoposide 25uM 1h, using NOTCH4 (Cleaved-Val1432) Antibody. The lane on the right is blocked with the synthesized peptide.

### Storage

-20°C for one year

501 Changsheng S Rd, Nanhu Dist, Jiaxing, Zhejiang, China

Tel: 86 21 31007137 | E-mail: [save@bt-laboratory.com](mailto:save@bt-laboratory.com) | [www.bt-laboratory.com](http://www.bt-laboratory.com)