

Cleaved-PARP-1 (G215) Polyclonal Antibody

Description

Product type	Primary Antibody
Code	BT-AP01960
Host	Rabbit
Isotype	IgG
Size	20ul, 50ul, 100ul
Immunogen	The antiserum was produced against synthesized peptide derived from human PARP. AA range:196-245
Mol wt	113084
Species reactivity	Human, Mouse, Rat
Clonality	Polyclonal
Recommended application	WB, ELISA
Concentration	1 mg/ml
Full name	Cleaved-PARP-1 (G215) Antibody
Synonyms	PARP1; ADPRT; PPOL; Poly [ADP-ribose] polymerase 1; PARP-1; ADP-ribosyltransferase diphtheria toxin-like 1; ARTD1; NAD(+) ADP-ribosyltransferase 1; ADPRT 1; Poly[ADP-ribose] synthase 1

This product is for research use only, not for use in human, therapeutic or diagnostic procedure.

Background

PARP1 encodes a chromatin-associated enzyme, poly(ADP-ribosyl)transferase, which modifies various nuclear proteins by poly(ADP-ribosylation). The modification is dependent on DNA and is involved in the regulation of various important cellular processes such as differentiation, proliferation, and tumor transformation and also in the regulation of the molecular events involved in the recovery of cell from DNA damage. In addition, poly(ADP-ribose) polymerase 1 may be the site of mutation in Fanconi anemia, and may participate in the pathophysiology of type I diabetes.

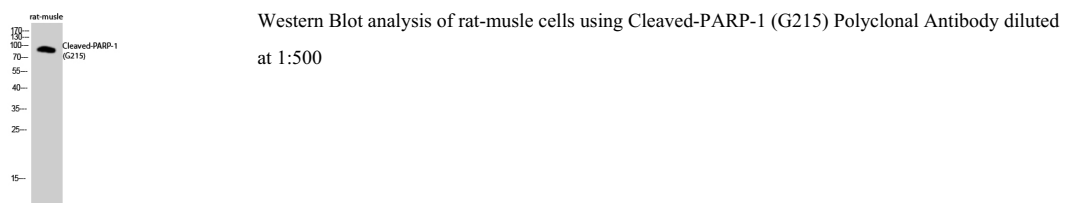
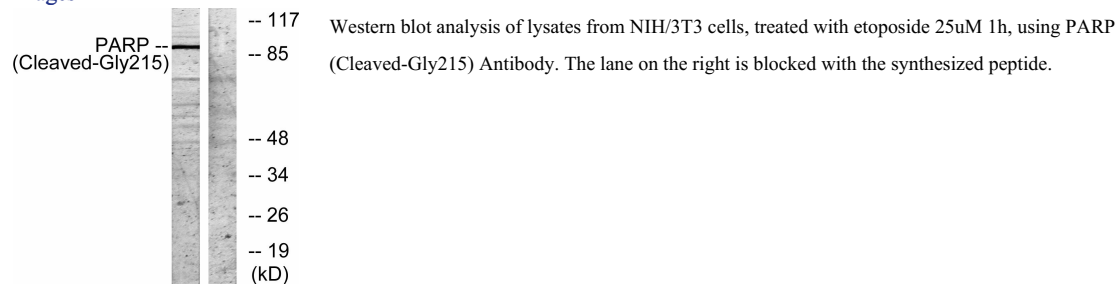
Recommended Dilution

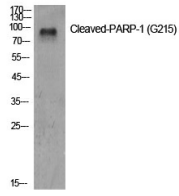
WB: 1: 500 - 1: 2000

ELISA: 1: 5000

Not yet tested in other applications.

Images





Western Blot analysis of various cells using Cleaved-PARP-1 (G215) Polyclonal Antibody diluted at 1:500

Storage

-20°C for one year

501 Changsheng S Rd, Nanhu Dist, Jiaxing, Zhejiang, China

Tel: 86 21 31007137 | E-mail: save@bt-laboratory.com | www.bt-laboratory.com