

Cleaved-Plasma Kallikrein HC (R390) Polyclonal Antibody

Description

Product type	Primary Antibody
Code	BT-AP01961
Host	Rabbit
Isotype	IgG
Size	20ul, 50ul, 100ul
Immunogen	The antiserum was produced against synthesized peptide derived from human KLKB1. AA range:341-390
Mol wt	71370
Species reactivity	Human
Clonality	Polyclonal
Recommended application	WB, IHC-p, ELISA
Concentration	1 mg/ml
Full name	Cleaved-Plasma Kallikrein HC (R390) Antibody
Synonyms	KLKB1; KLK3; Plasma kallikrein; Fletcher factor; Kininogenin; Plasma prekallikrein

This product is for research use only, not for use in human, therapeutic or diagnostic procedure.

Background

KLKB1 encodes a glycoprotein that participates in the surface-dependent activation of blood coagulation, fibrinolysis, kinin generation and inflammation. The encoded preproprotein present in plasma as a non-covalent complex with high molecular weight kininogen undergoes proteolytic processing mediated by activated coagulation factor XII to generate a disulfide-linked, heterodimeric serine protease comprised of heavy and light chains. Certain mutations in KLKB1 cause prekallikrein deficiency. Alternative splicing results in multiple transcript variants encoding different isoforms.

Recommended Dilution

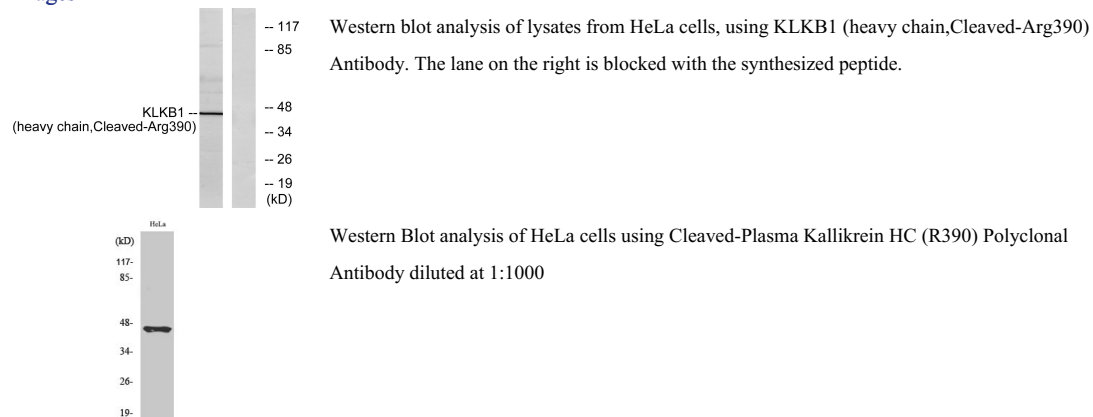
WB: 1: 500 - 1: 2000

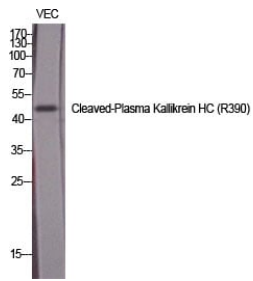
IHC: 1: 100 - 1: 300

ELISA: 1: 10000

Not yet tested in other applications.

Images





Western Blot analysis of various cells using Cleaved-Plasma Kallikrein HC (R390) Polyclonal
Antibody diluted at 1:1000

Storage

-20°C for one year

501 Changsheng S Rd, Nanhu Dist, Jiaxing, Zhejiang, China

Tel: 86 21 31007137 | E-mail: save@bt-laboratory.com | www.bt-laboratory.com