

Cleaved-Plasminogen HC A short form (V98) Polyclonal Antibody

Description

Product type	Primary Antibody
Code	BT-AP01962
Host	Rabbit
Isotype	IgG
Size	20ul, 50ul, 100ul
Immunogen	The antiserum was produced against synthesized peptide derived from human PLMN. AA range:79-128
Mol wt	90569
Species reactivity	Human, Mouse, Rat
Clonality	Polyclonal
Recommended application	WB, ELISA
Concentration	1 mg/ml
Full name	Cleaved-Plasminogen HC A short form (V98) Antibody
Synonyms	PLG; Plasminogen

This product is for research use only, not for use in human, therapeutic or diagnostic procedure.

Background

The protein encoded by PLG is a secreted blood zymogen that is activated by proteolysis and converted to plasmin and angiostatin. Plasmin dissolves fibrin in blood clots and is an important protease in many other cellular processes while angiostatin inhibits angiogenesis. Defects in PLG are likely a cause of thrombophilia and ligneous conjunctivitis. Two transcript variants encoding different isoforms have been found for PLG.

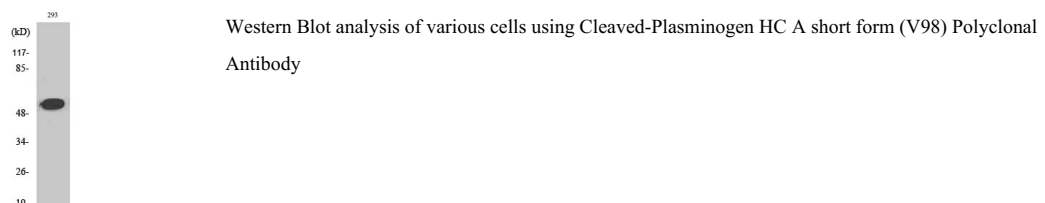
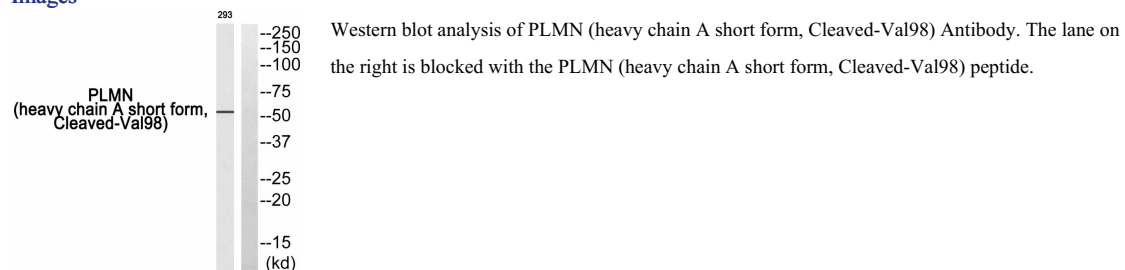
Recommended Dilution

WB: 1: 500 - 1: 2000

ELISA: 1: 10000

Not yet tested in other applications.

Images



Storage

-20°C for one year

501 Changsheng S Rd, Nanhu Dist, Jiaxing, Zhejiang, China

Tel: 86 21 31007137 | E-mail: save@bt-laboratory.com | www.bt-laboratory.com