

Cleaved-Spectrin Alpha II (D1185) Polyclonal Antibody

Description

Product type	Primary Antibody
Code	BT-AP01963
Host	Rabbit
Isotype	IgG
Size	20ul, 50ul, 100ul
Immunogen	The antiserum was produced against synthesized peptide derived from human SPTA2. AA range:1136-1185
Mol wt	284539
Species reactivity	Human
Clonality	Polyclonal
Recommended application	WB, ELISA
Concentration	1 mg/ml
Full name	Cleaved-Spectrin alpha II (D1185) Antibody
Synonyms	SPTAN1; NEAS; SPTA2; Spectrin alpha chain; non-erythrocytic 1; Alpha-II spectrin; Fodrin alpha chain; Spectrin, non-erythroid alpha subunit

This product is for research use only, not for use in human, therapeutic or diagnostic procedure.

Background

Spectrins are a family of filamentous cytoskeletal proteins that function as essential scaffold proteins that stabilize the plasma membrane and organize intracellular organelles. Spectrins are composed of alpha and beta dimers that associate to form tetramers linked in a head-to-head arrangement. SPTAN1 encodes an alpha spectrin that is specifically expressed in nonerythrocytic cells. Spectrin alpha chain non-erythrocytic 1 has been implicated in other cellular functions including DNA repair and cell cycle regulation. Mutations in SPTAN1 are the cause of early infantile epileptic encephalopathy-5. Alternate splicing results in multiple transcript variants.

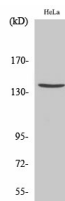
Recommended Dilution

WB: 1: 500 - 1: 2000

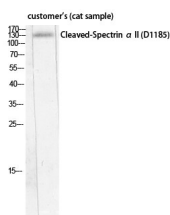
ELISA: 1: 10000

Not yet tested in other applications.

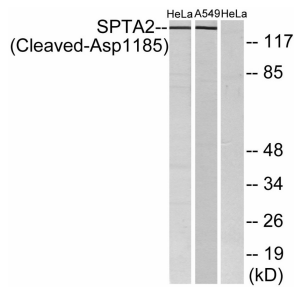
Images



Western Blot analysis of various cells using Cleaved-Spectrin α II (D1185) Polyclonal Antibody diluted at 1:500



Western Blot analysis of customer's (cat sample) using Cleaved-Spectrin α II (D1185) Polyclonal Antibody diluted at 1:500



Western blot analysis of lysates from HeLa and A549 cells, treated with etoposide 25uM 24H, using SPTA2 (Cleaved-Asp1185) Antibody. The lane on the right is blocked with the synthesized peptide.

Storage

-20°C for one year

501 Changsheng S Rd, Nanhu Dist, Jiaxing, Zhejiang, China

Tel: 86 21 31007137 | E-mail: save@bt-laboratory.com | www.bt-laboratory.com