

CLIC3 Polyclonal Antibody

Description

Product type	Primary Antibody
Code	BT-AP01972
Host	Rabbit
Isotype	IgG
Size	20ul, 50ul, 100ul
Immunogen	The antiserum was produced against synthesized peptide derived from human CLIC3. AA range:21-70
Mol wt	26648
Species reactivity	Human
Clonality	Polyclonal
Recommended application	WB, ELISA
Concentration	1 mg/ml
Full name	CLIC3 Antibody
Synonyms	CLIC3; Chloride intracellular channel protein 3

This product is for research use only, not for use in human, therapeutic or diagnostic procedure.

Background

Chloride channels are a diverse group of proteins that regulate fundamental cellular processes including stabilization of cell membrane potential, transepithelial transport, maintenance of intracellular pH, and regulation of cell volume. Chloride intracellular channel 3 (CLIC3) is a member of the p64 family and is predominantly localized in the nucleus and stimulates chloride ion channel activity. In addition, this protein may participate in cellular growth control, based on its association with ERK7, a member of the MAP kinase family.

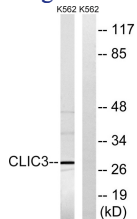
Recommended Dilution

WB: 1: 500 - 1: 2000

ELISA: 1: 40000

Not yet tested in other applications.

Images



Western blot analysis of lysates from K562 cells, using CLIC3 Antibody. The lane on the right is blocked with the synthesized peptide.

Storage

-20°C for one year