

CLIC4 Polyclonal Antibody

Description

Product type	Primary Antibody
Code	BT-AP01973
Host	Rabbit
Isotype	IgG
Size	20ul, 50ul, 100ul
Immunogen	The antiserum was produced against synthesized peptide derived from human CLIC4. AA range: 1-50
Mol wt	28772
Species reactivity	Human, Mouse, Rat
Clonality	Polyclonal
Recommended application	WB, IHC-p, ELISA
Concentration	1 mg/ml
Full name	CLIC4 Antibody
Synonyms	CLIC4; Chloride intracellular channel protein 4; Intracellular chloride ion channel protein p64H1

This product is for research use only, not for use in human, therapeutic or diagnostic procedure.

Background

Chloride channels are a diverse group of proteins that regulate fundamental cellular processes including stabilization of cell membrane potential, transepithelial transport, maintenance of intracellular pH, and regulation of cell volume. Chloride intracellular channel 4 (CLIC4) protein, encoded by the CLIC4 gene, is a member of the p64 family; the gene is expressed in many tissues and exhibits an intracellular vesicular pattern in Panc-1 cells (pancreatic cancer cells).

Recommended Dilution

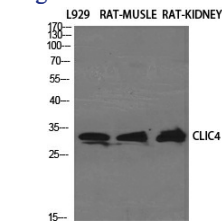
WB: 1: 500 - 1: 2000

IHC: 1: 100 - 1: 300

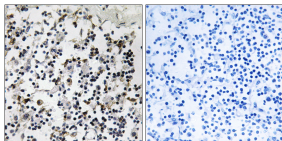
ELISA: 1: 40000

Not yet tested in other applications.

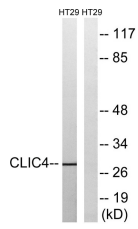
Images



Western Blot analysis of various cells using CLIC4 Polyclonal Antibody diluted at 1:1000



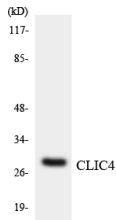
Immunohistochemistry analysis of paraffin-embedded human lymph node tissue, using CLIC4 Antibody. The picture on the right is blocked with the synthesized peptide.



Western blot analysis of lysates from HT-29 cells, using CLIC4 Antibody. The lane on the right is blocked with the synthesized peptide.



Western Blot analysis of HT29 cells using CLIC4 Polyclonal Antibody diluted at 1:1000



Western blot analysis of the lysates from HeLa cells using CLIC4 antibody.

Storage

-20°C for one year

501 Changsheng S Rd, Nanhu Dist, Jiaxing, Zhejiang, China

Tel: 86 21 31007137 | E-mail: save@bt-laboratory.com | www.bt-laboratory.com