

CLIC4 Polyclonal Antibody

Description

Product type	Primary Antibody
Code	BT-AP01974
Host	Rabbit
Isotype	IgG
Size	20ul, 50ul, 100ul
Immunogen	Synthetic Peptide of CLIC4
Mol wt	26648
Species reactivity	Human, Rat, Mouse
Clonality	Polyclonal
Recommended application	WB, IHC-p
Concentration	1 mg/ml
Full name	CLIC4 Antibody
Synonyms	CLIC4; Chloride intracellular channel protein 4; Intracellular chloride ion channel protein p64H1

This product is for research use only, not for use in human, therapeutic or diagnostic procedure.

Background

Chloride channels are a diverse group of proteins that regulate fundamental cellular processes including stabilization of cell membrane potential, transepithelial transport, maintenance of intracellular pH, and regulation of cell volume. Chloride intracellular channel 3 (CLIC3) is a member of the p64 family and is predominantly localized in the nucleus and stimulates chloride ion channel activity. In addition, this protein may participate in cellular growth control, based on its association with ERK7, a member of the MAP kinase family.

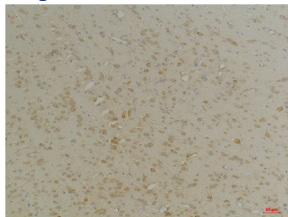
Recommended Dilution

WB: 1: 1000 - 2000

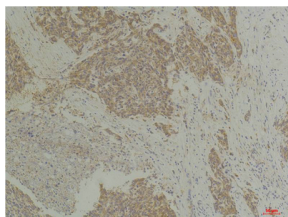
IHC: 1: 100 - 200

Not yet tested in other applications.

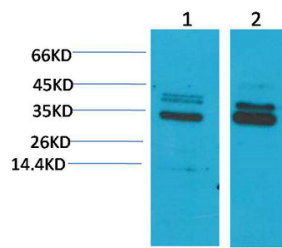
Images



Immunohistochemical analysis of paraffin-embedded Rat Brain Tissue using CLIC4Rabbit pAb diluted at 1:200.



Immunohistochemical analysis of paraffin-embedded Human Breast Carcinoma using CLIC4Rabbit pAb diluted at 1:200.



Western blot analysis of 1) Mouse Brain Tissue, 2)Rat Brain Tissue, with CLIC4 Rabbit pAb diluted at 1:2,000.

Storage

-20°C for one year

501 Changsheng S Rd, Nanhu Dist, Jiaxing, Zhejiang, China

Tel: 86 21 31007137 | E-mail: save@bt-laboratory.com | www.bt-laboratory.com