

CLIP-115 Polyclonal Antibody

Description

Product type	Primary Antibody
Code	BT-AP01976
Host	Rabbit
Isotype	IgG
Size	20ul, 50ul, 100ul
Immunogen	The antiserum was produced against synthesized peptide derived from human CLIP2. AA range:997-1046
Mol wt	115837
Species reactivity	Human, Mouse, Rat
Clonality	Polyclonal
Recommended application	WB, ELISA
Concentration	1 mg/ml
Full name	CLIP-115 Antibody
Synonyms	CLIP2; CYLN2; KIAA0291; WBSCR3; WBSCR4; WSCR4; CAP-Gly domain-containing linker protein 2; Cytoplasmic linker protein 115; CLIP-115; Cytoplasmic linker protein 2; Williams-Beuren syndrome chromosomal

This product is for research use only, not for use in human, therapeutic or diagnostic procedure.

Background

CAP-Gly domain containing linker protein 2 encoded by CLIP2 belongs to the family of cytoplasmic linker proteins, which have been proposed to mediate the interaction between specific membranous organelles and microtubules. This protein was found to associate with both microtubules and an organelle called the dendritic lamellar body. CLIP2 is hemizygotously deleted in Williams syndrome, a multisystem developmental disorder caused by the deletion of contiguous genes at 7q11.23. Alternative splicing of this gene generates 2 transcript variants.

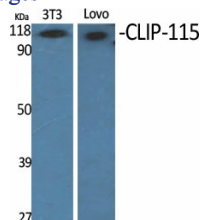
Recommended Dilution

WB: 1: 500 - 1: 2000

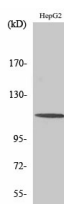
ELISA: 1: 5000

Not yet tested in other applications.

Images



Western Blot analysis of various cells using CLIP-115 Polyclonal Antibody



Western Blot analysis of A549 cells using CLIP-115 Polyclonal Antibody

Storage

-20°C for one year

501 Changsheng S Rd, Nanhu Dist, Jiaxing, Zhejiang, China

Tel: 86 21 31007137 | E-mail: save@bt-laboratory.com | www.bt-laboratory.com