

CLIP-170 Polyclonal Antibody

Description

Product type	Primary Antibody
Code	BT-AP01977
Host	Rabbit
Isotype	IgG
Size	20ul, 50ul, 100ul
Immunogen	The antiserum was produced against synthesized peptide derived from human CLIP1. AA range:1291-1340
Mol wt	160990
Species reactivity	Human, Mouse, Rat
Clonality	Polyclonal
Recommended application	WB, ELISA
Concentration	1 mg/ml
Full name	CLIP-170 Antibody
Synonyms	CLIP1; CYLN1; RSN; CAP-Gly domain-containing linker protein 1; Cytoplasmic linker protein 1; Cytoplasmic linker protein 170 alpha-2; CLIP-170; Reed-Sternberg intermediate filament-associated protein;

This product is for research use only, not for use in human, therapeutic or diagnostic procedure.

Background

CAP-Gly domain containing linker protein 1 encoded by CLIP1 links endocytic vesicles to microtubules. CLIP1 is highly expressed in Reed-Sternberg cells of Hodgkin disease. Several transcript variants encoding different isoforms have been found for CLIP1.

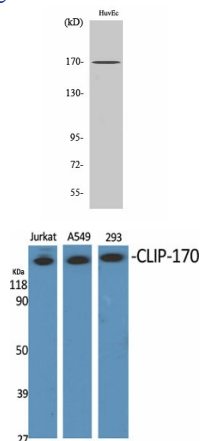
Recommended Dilution

WB: 1: 500 - 1: 2000

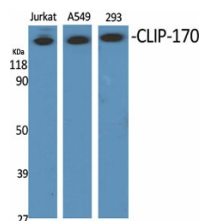
ELISA: 1: 20000

Not yet tested in other applications.

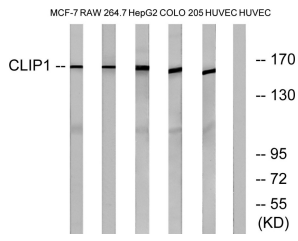
Images



Western Blot analysis of RAW264.7 cells using CLIP-170 Polyclonal Antibody



Western Blot analysis of various cells using CLIP-170 Polyclonal Antibody



Western blot analysis of lysates from HUVEC, COLO, MCF-7, HepG2, and RAW264.7 cells, using CLIP1 Antibody. The lane on the right is blocked with the synthesized peptide.

Storage

-20°C for one year

501 Changsheng S Rd, Nanhu Dist, Jiaxing, Zhejiang, China

Tel: 86 21 31007137 | E-mail: save@bt-laboratory.com | www.bt-laboratory.com