

## CLIP3 Polyclonal Antibody

### Description

|                                |  |
|--------------------------------|--|
| <b>Product type</b>            | Primary Antibody   |
| <b>Code</b>                    | BT-AP01978   |
| <b>Host</b>                    | Rabbit   |
| <b>Isotype</b>                 | IgG  |
| <b>Size</b>                    | 20ul, 50ul, 100ul  |
| <b>Immunogen</b>               | The antiserum was produced against synthesized peptide derived from human CLIP3. AA range:361-410  |
| <b>Mol wt</b>                  | 59560  |
| <b>Species reactivity</b>      | Human, Mouse, Rat  |
| <b>Clonality</b>               | Polyclonal   |
| <b>Recommended application</b> | WB, IHC-p, IF, ELISA   |
| <b>Concentration</b>           | 1 mg/ml  |
| <b>Full name</b>               | CLIP3 Antibody   |
| <b>Synonyms</b>                | CLIP3; CLIPR59; CAP-Gly domain-containing linker protein 3; Cytoplasmic linker protein 170-related 59 kDa protein; CLIP-170-related 59 kDa protein; CLIPR-59 |

**This product is for research use only, not for use in human, therapeutic or diagnostic procedure.**

### Background

CLIP3 encodes a member of the cytoplasmic linker protein 170 family. Members of this protein family contain a cytoskeleton-associated protein glycine-rich domain and mediate the interaction of microtubules with cellular organelles. The encoded protein (CAP-Gly domain containing linker protein 3) plays a role in T cell apoptosis by facilitating the association of tubulin and the lipid raft ganglioside GD3. The encoded protein also functions as a scaffold protein mediating membrane localization of phosphorylated protein kinase B. Alternatively spliced transcript variants have been observed for CLIP3.

### Recommended Dilution

WB: 1: 500 - 1: 2000

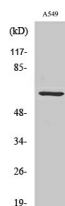
IHC: 1: 100 - 1: 300

IF: 1: 200 - 1: 1000

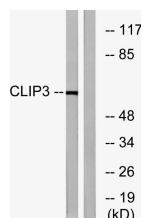
ELISA: 1: 40000

Not yet tested in other applications.

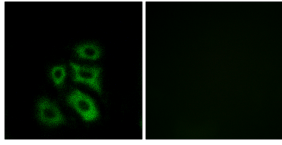
### Images



Western Blot analysis of various cells using CLIP3 Polyclonal Antibody



Western blot analysis of lysates from A549 cells, using CLIP3 Antibody. The lane on the right is blocked with the synthesized peptide.



Immunofluorescence analysis of A549 cells, using CLIP3 Antibody. The picture on the right is blocked with the synthesized peptide.

### Storage

-20°C for one year

501 Changsheng S Rd, Nanhu Dist, Jiaxing, Zhejiang, China

Tel: 86 21 31007137 | E-mail: [save@bt-laboratory.com](mailto:save@bt-laboratory.com) | [www.bt-laboratory.com](http://www.bt-laboratory.com)