

CLIP4 Polyclonal Antibody

Description

Product type	Primary Antibody
Code	BT-AP01979
Host	Rabbit
Isotype	IgG
Size	20ul, 50ul, 100ul
Immunogen	The antiserum was produced against synthesized peptide derived from human CLIP4. AA range:321-370
Mol wt	76317
Species reactivity	Human
Clonality	Polyclonal
Recommended application	WB, ELISA
Concentration	1 mg/ml
Full name	CLIP4 Antibody
Synonyms	CLIP4; RSNL2; CAP-Gly domain-containing linker protein 4; Restin-like protein 2

This product is for research use only, not for use in human, therapeutic or diagnostic procedure.

Background

CLIP4 (CAP-GLY domain containing linker protein family, member 4), also known as RSNL2 (restin-like protein 2), is a 705 amino acid protein that contains three CAP-Gly domains, three ANK repeats, and exists as four alternatively spliced isoforms. The gene encoding CLIP4 maps to human chromosome 2p23.2. As the second largest human chromosome, chromosome 2 makes up approximately 8% of the human genome and contains 237 million bases encoding over 1,400 genes. A number of genetic diseases are linked to genes on chromosome 2. Harlequin ichthyosis, a rare skin deformity, is associated with mutations in the ABCA12 gene. The lipid metabolic disorder sitosterolemia is associated with ABCG5 and ABCG8. An extremely rare recessive genetic disorder, Alström syndrome, is related to mutations in the ALMS1 gene.

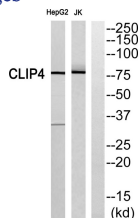
Recommended Dilution

WB: 1: 500 - 1: 2000

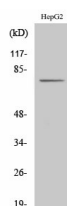
ELISA: 1: 40000

Not yet tested in other applications.

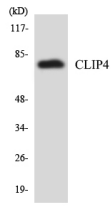
Images



Western blot analysis of CLIP4 Antibody. The lane on the right is blocked with the CLIP4 peptide.



Western Blot analysis of various cells using CLIP4 Polyclonal Antibody



Western blot analysis of the lysates from HUVEC cells using CLIP4 antibody.

Storage

-20°C for one year

501 Changsheng S Rd, Nanhu Dist, Jiaxing, Zhejiang, China

Tel: 86 21 31007137 | E-mail: save@bt-laboratory.com | www.bt-laboratory.com