

CLK2 Polyclonal Antibody

Description

Product type	Primary Antibody
Code	BT-AP01981
Host	Rabbit
Isotype	IgG
Size	20ul, 50ul, 100ul
Immunogen	The antiserum was produced against synthesized peptide derived from human CLK2. AA range:1-50
Mol wt	60090
Species reactivity	Human, Mouse, Rat
Clonality	Polyclonal
Recommended application	WB, IHC-p, ELISA
Concentration	1 mg/ml
Full name	CLK2 Antibody
Synonyms	CLK2; Dual specificity protein kinase CLK2; CDC-like kinase 2

This product is for research use only, not for use in human, therapeutic or diagnostic procedure.

Background

CLK2 encodes a dual specificity protein kinase that phosphorylates serine/threonine and tyrosine-containing substrates. Activity of this protein regulates serine- and arginine-rich (SR) proteins of the spliceosomal complex, thereby influencing alternative transcript splicing. Chromosomal translocations have been characterized between this locus and the PAFAH1B3 (platelet-activating factor acetylhydrolase 1b, catalytic subunit 3 (29kDa)) gene on chromosome 19, resulting in the production of a fusion protein. Note that CLK2 is distinct from the Telo2 gene (GeneID:9894), which shares the CLK2 alias, but encodes a protein that is involved in telomere length regulation. There is a pseudogene for CLK2 on chromosome 7. Alternative splicing results in multiple transcript variants.

Recommended Dilution

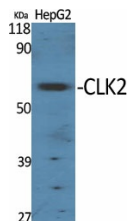
WB: 1: 500 - 1: 2000

IHC: 1: 100 - 1: 300

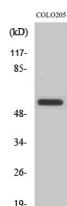
ELISA: 1: 20000

Not yet tested in other applications.

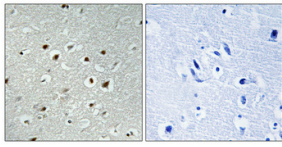
Images



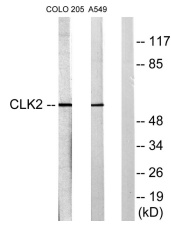
Western Blot analysis of various cells using CLK2 Polyclonal Antibody cells nucleus.



Western Blot analysis of A549 cells using CLK2 Polyclonal Antibody cells nucleus.



Immunohistochemical analysis of paraffin-embedded Human brain. Antibody was diluted at 1:100 (4° overnight). High-pressure and temperature Tris-EDTA, pH 8.0 was used for antigen retrieval. Negative control (right) obtained from antibody was pre-absorbed by immunogen peptide.



Western blot analysis of lysates from COLO205 and A549 cells, using CLK2 Antibody. The lane on the right is blocked with the synthesized peptide.

Storage

-20°C for one year

501 Changsheng S Rd, Nanhu Dist, Jiaxing, Zhejiang, China

Tel: 86 21 31007137 | E-mail: save@bt-laboratory.com | www.bt-laboratory.com