

CLN1 Polyclonal Antibody

Description

Product type	Primary Antibody
Code	BT-AP01985
Host	Rabbit
Isotype	IgG
Size	20ul, 50ul, 100ul
Immunogen	The antiserum was produced against synthesized peptide derived from human CLN1. AA range:16-65
Mol wt	34193
Species reactivity	Human, Mouse, Rat
Clonality	Polyclonal
Recommended application	IHC-p, ELISA
Concentration	1 mg/ml
Full name	CLN1 Antibody
Synonyms	PPT1; PPT; Palmitoyl-protein thioesterase 1; PPT-1; Palmitoyl-protein hydrolase 1

This product is for research use only, not for use in human, therapeutic or diagnostic procedure.

Background

The protein encoded by PPT1 (palmitoyl-protein thioesterase 1) is a small glycoprotein involved in the catabolism of lipid-modified proteins during lysosomal degradation. The encoded enzyme removes thioester-linked fatty acyl groups such as palmitate from cysteine residues. Defects in PPT1 are a cause of infantile neuronal ceroid lipofuscinosis 1 (CLN1, or INCL) and neuronal ceroid lipofuscinosis 4 (CLN4). Two transcript variants encoding different isoforms have been found for PPT1.

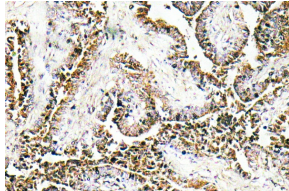
Recommended Dilution

IHC: 1: 100 - 1: 300

ELISA: 1: 10000

Not yet tested in other applications.

Images



Immunohistochemistry analysis of CLN1 antibody in paraffin-embedded human prostate carcinoma tissue.

Storage

-20°C for one year

501 Changsheng S Rd, Nanhu Dist, Jiaxing, Zhejiang, China

Tel: 86 21 31007137 | E-mail: save@bt-laboratory.com | www.bt-laboratory.com