

c-Maf Polyclonal Antibody

Description

Product type	Primary Antibody
Code	BT-AP01998
Host	Rabbit
Isotype	IgG
Size	20ul, 50ul, 100ul
Immunogen	The antiserum was produced against synthesized peptide derived from human Maf. AA range:301-350
Mol wt	41961
Species reactivity	Human, Mouse, Rat
Clonality	Polyclonal
Recommended application	WB, ELISA
Concentration	1 mg/ml
Full name	c-Maf Antibody
Synonyms	MAF; Transcription factor Maf; Proto-oncogene c-Maf; V-maf musculoaponeurotic fibrosarcoma oncogene homolog

This product is for research use only, not for use in human, therapeutic or diagnostic procedure.

Background

MAF bZIP transcription factor encoded by MAF is a DNA-binding, leucine zipper-containing transcription factor that acts as a homodimer or as a heterodimer. Depending on the binding site and binding partner, the encoded protein can be a transcriptional activator or repressor. This protein plays a role in the regulation of several cellular processes, including embryonic lens fiber cell development, increased T-cell susceptibility to apoptosis, and chondrocyte terminal differentiation. Defects in this gene are a cause of juvenile-onset pulverulent cataract as well as congenital cerulean cataract 4 (CCA4). Two transcript variants encoding different isoforms have been found for MAF.

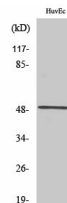
Recommended Dilution

WB: 1: 500 - 1: 2000

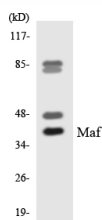
ELISA: 1: 10000

Not yet tested in other applications.

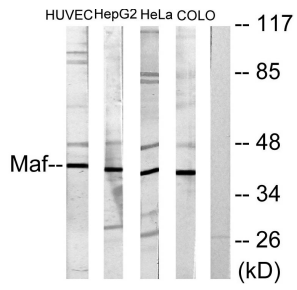
Images



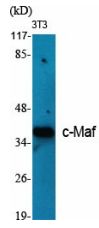
Western Blot analysis of COLO205 cells using c-Maf Polyclonal Antibody diluted at 1:500



Western blot analysis of the lysates from HeLa cells using Maf antibody.



Western blot analysis of lysates from HUVEC, HepG2, HeLa, and COLO205 cells, using Maf Antibody. The lane on the right is blocked with the synthesized peptide.



Western Blot analysis of various cells using c-Maf Polyclonal Antibody diluted at 1:500

Storage

-20°C for one year

501 Changsheng S Rd, Nanhu Dist, Jiaxing, Zhejiang, China

Tel: 86 21 31007137 | E-mail: save@bt-laboratory.com | www.bt-laboratory.com