

## CMTM1 Polyclonal Antibody

### Description

Product type	Primary Antibody
Code	BT-AP02002
Host	Rabbit
Isotype	IgG
Size	20ul, 50ul, 100ul
Immunogen	The antiserum was produced against synthesized peptide derived from human CKLF1. AA range:120-169
Mol wt	18576
Species reactivity	Human
Clonality	Polyclonal
Recommended application	IF, ELISA
Concentration	1 mg/ml
Full name	CMTM1 Antibody
Synonyms	CMTM1; CKLFSF1; CKLF-like MARVEL transmembrane domain-containing protein 1; Chemokine-like factor superfamily member 1

**This product is for research use only, not for use in human, therapeutic or diagnostic procedure.**

### Background

CMTM1 belongs to the chemokine-like factor gene superfamily, a novel family that is similar to the chemokine and the transmembrane 4 superfamilies of signaling molecules. The CKLF like MARVEL transmembrane domain containing 1 encoded by CMTM1 may play an important role in testicular development. Alternatively spliced transcript variants encoding different isoforms have been identified. Naturally occurring read-through transcription occurs between this locus and the neighboring locus CKLF (chemokine-like factor).

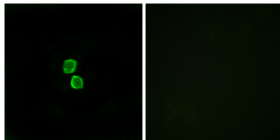
### Recommended Dilution

IF: 1: 200 - 1: 1000

ELISA: 1: 40000

Not yet tested in other applications.

### Images



Immunofluorescence analysis of MCF7 cells, using CKLF1 Antibody. The picture on the right is blocked with the synthesized peptide.

### Storage

-20°C for one year