

CMTM6 Polyclonal Antibody

Description

Product type	Primary Antibody
Code	BT-AP02007
Host	Rabbit
Isotype	IgG
Size	20ul, 50ul, 100ul
Immunogen	The antiserum was produced against synthesized peptide derived from human CKLF6. AA range:131-180
Mol wt	20419
Species reactivity	Human
Clonality	Polyclonal
Recommended application	WB, ELISA
Concentration	1 mg/ml
Full name	CMTM6 Antibody
Synonyms	CMTM6; CKLFSF6; CKLF-like MARVEL transmembrane domain-containing protein 6; Chemokine-like factor superfamily member 6

This product is for research use only, not for use in human, therapeutic or diagnostic procedure.

Background

CMTM6 (CKLF like MARVEL transmembrane domain containing 6) belongs to the chemokine-like factor gene superfamily, a novel family that is similar to the chemokine and transmembrane 4 superfamilies. CMTM6 is one of several chemokine-like factor genes located in a cluster on chromosome 3. CMTM6 is widely expressed in many tissues, but the exact function of the encoded protein is unknown.

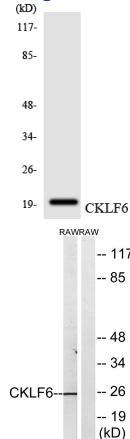
Recommended Dilution

WB: 1: 500 - 1: 2000

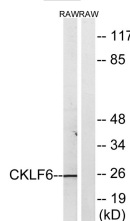
ELISA: 1: 20000

Not yet tested in other applications.

Images



Western blot analysis of the lysates from HeLa cells using CKLF6 antibody.



Western blot analysis of lysates from RAW264.7 cells, using CKLF6 Antibody. The lane on the right is blocked with the synthesized peptide.

Storage

-20°C for one year

501 Changsheng S Rd, Nanhu Dist, Jiaxing, Zhejiang, China

Tel: 86 21 31007137 | E-mail: save@bt-laboratory.com | www.bt-laboratory.com