

IFN-beta Polyclonal Antibody

Description

Product type	Primary Antibody
Code	BT-AP02022
Host	Rabbit
Isotype	IgG
Size	20ul, 50ul, 100ul
Immunogen	Synthetic peptide from human protein at AA range: 91-140
Mol wt	N/A
Species reactivity	Human, Rat, Mouse
Clonality	Polyclonal
Recommended application	IHC-p, IF, ELISA
Concentration	1 mg/ml
Full name	Interferon beta
Synonyms	Interferon beta (IFN-beta;Fibroblast interferon); Interferon beta; IFN-beta; Fibroblast interferon)

This product is for research use only, not for use in human, therapeutic or diagnostic procedure.

Background

This gene encodes a cytokine that belongs to the interferon family of signaling proteins| which are released as part of the innate immune response to pathogens. The protein encoded by this gene belongs to the type I class of interferons| which are important for defense against viral infections. In addition| type I interferons are involved in cell differentiation and anti-tumor defenses. Following secretion in response to a pathogen| type I interferons bind a homologous receptor complex and induce transcription of genes such as those encoding inflammatory cytokines and chemokines. Overactivation of type I interferon secretion is linked to autoimmune diseases. Mice deficient for this gene display several phenotypes including defects in B cell maturation and increased susceptibility to viral infection.

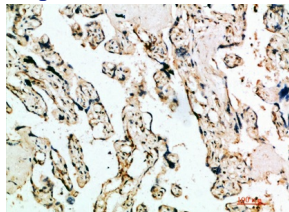
Recommended Dilution

IHC-p: 1: 50 - 1: 200

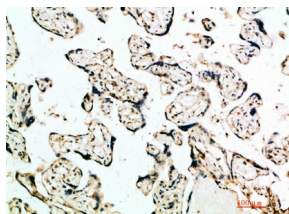
ELISA: 1: 10000 - 1: 20000

Not yet tested in other applications.

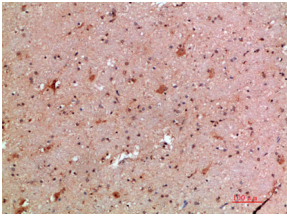
Images



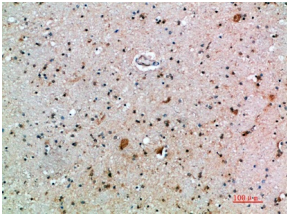
Immunohistochemical analysis of paraffin-embedded human-placenta, antibody was diluted at 1:200



Immunohistochemical analysis of paraffin-embedded human-placenta, antibody was diluted at 1:200



Immunohistochemical analysis of paraffin-embedded human-brain, antibody was diluted at 1:200



Immunohistochemical analysis of paraffin-embedded human-brain, antibody was diluted at 1:200

Storage

-20°C for 1 year

501 Changsheng S Rd, Nanhu Dist, Jiaxing, Zhejiang, China

Tel: 86 21 31007137 | E-mail: save@bt-laboratory.com | www.bt-laboratory.com