

Connexin 43(Phospho Ser368) Polyclonal Antibody

Description

Product type	Primary Antibody
Code	BT-AP02024
Host	Rabbit
Isotype	IgG
Size	100ul, 50ul, 20ul
Immunogen	The antiserum was produced against synthesized peptide derived from human Connexin 43 around the phosphorylation site of Ser367. AA range:332-381
Mol wt	43008
Species reactivity	Human, Mouse, Rat
Clonality	Polyclonal
Recommended application	WB, IHC-p, IF, ELISA
Concentration	1 mg/ml
Full name	Gap junction alpha-1 protein
Synonyms	Gap junction alpha-1 protein; GJA1; GJAL; Gap junction alpha-1 protein; Connexin-43; Cx43; Gap junction 43 kDa heart protein

This product is for research use only, not for use in human, therapeutic or diagnostic procedure.

Background

This gene is a member of the connexin gene family. The encoded protein is a component of gap junctions, which are composed of arrays of intercellular channels that provide a route for the diffusion of low molecular weight materials from cell to cell. The encoded protein is the major protein of gap junctions in the heart that are thought to have a crucial role in the synchronized contraction of the heart and in embryonic development. A related intronless pseudogene has been mapped to chromosome 5. Mutations in this gene have been associated with oculodentodigital dysplasia, autosomal recessive craniometaphyseal dysplasia and heart malformations.

Recommended Dilution

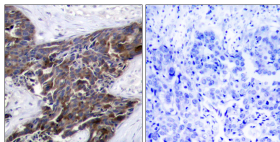
WB: 1: 500 - 1: 2000

IHC-p: 1: 100 - 1: 300

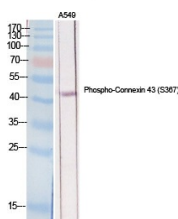
ELISA: 1: 20000

Not yet tested in other applications.

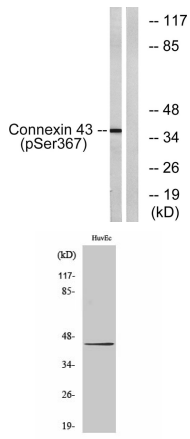
Images



Immunohistochemistry analysis of paraffin-embedded human breast carcinoma, using Connexin 43 (Phospho-Ser367) Antibody. The picture on the right is blocked with the phospho peptide.



Western Blot analysis of various cells using Phospho-Connexin 43 (S368) Polyclonal Antibody diluted at 1:2000



Western Blot analysis of HuvEc cells using Phospho-Connexin 43 (S368) Polyclonal Antibody diluted at 1:2000

Western blot analysis of lysates from K562 cells treated with PMA 200ng/ml 10', using Connexin 43 (Phospho-Ser367) Antibody. The lane on the right is blocked with the phospho peptide.

Storage

-20°C for 1 year

501 Changsheng S Rd, Nanhu Dist, Jiaxing, Zhejiang, China

Tel: 86 21 31007137 | E-mail: save@bt-laboratory.com | www.bt-laboratory.com