

CNG-1 Polyclonal Antibody

Description

Product type	Primary Antibody
Code	BT-AP02025
Host	Rabbit
Isotype	IgG
Size	20ul, 50ul, 100ul
Immunogen	The antiserum was produced against synthesized peptide derived from human CNGA1. AA range:401-450
Mol wt	79126
Species reactivity	Human, Mouse, Rat
Clonality	Polyclonal
Recommended application	WB, ELISA
Concentration	1 mg/ml
Full name	CNG-1 Antibody
Synonyms	CNGA1; CNCG; CNCG1; cGMP-gated cation channel alpha-1; Cyclic nucleotide-gated cation channel 1; Cyclic nucleotide-gated channel alpha-1; CNG channel alpha-1; CNG-1; CNG1; Cyclic nucleotide-gated chan

This product is for research use only, not for use in human, therapeutic or diagnostic procedure.

Background

The cyclic nucleotide gated channel alpha 1 encoded by CNGA1 is involved in phototransduction. Along with another protein, the encoded protein forms a cGMP-gated cation channel in the plasma membrane, allowing depolarization of rod photoreceptors. This represents the last step in the phototransduction pathway. Defects in this gene are a cause of retinitis pigmentosa autosomal recessive (ARRP) disease. Two transcript variants encoding different isoforms have been found for this gene.

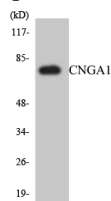
Recommended Dilution

WB: 1: 500 - 1: 2000

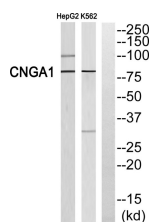
ELISA: 1: 40000

Not yet tested in other applications.

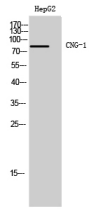
Images



Western blot analysis of the lysates from HepG2 cells using CNGA1 antibody.



Western blot analysis of CNGA1 Antibody. The lane on the right is blocked with the CNGA1 peptide.



Western Blot analysis of HepG2 cells using CNG-1 Polyclonal Antibody

Storage

-20°C for one year

501 Changsheng S Rd, Nanhu Dist, Jiaxing, Zhejiang, China

Tel: 86 21 31007137 | E-mail: save@bt-laboratory.com | www.bt-laboratory.com