

CNG-1Beta Polyclonal Antibody

Description

Product type	Primary Antibody
Code	BT-AP02026
Host	Rabbit
Isotype	IgG
Size	20ul, 50ul, 100ul
Immunogen	The antiserum was produced against synthesized peptide derived from human CNGB1. AA range:571-620
Mol wt	102285
Species reactivity	Human, Mouse, Rat
Clonality	Polyclonal
Recommended application	WB, ELISA
Concentration	1 mg/ml
Full name	CNG-1beta Antibody
Synonyms	CNGB1; CNCG2; CNCG3L; CNCG4; RCNC2; Cyclic nucleotide-gated cation channel beta-1; Cyclic nucleotide-gated cation channel 4; CNG channel 4; CNG-4; CNG4; Cyclic nucleotide-gated cation channel gamma; C

This product is for research use only, not for use in human, therapeutic or diagnostic procedure.

Background

In humans, the rod photoreceptor cGMP-gated cation channel helps regulate ion flow into the rod photoreceptor outer segment in response to light-induced alteration of the levels of intracellular cGMP. This channel consists of two subunits, alpha and beta, with the protein encoded by this gene representing the beta subunit. Defects in CNGB1 are a cause of cause of retinitis pigmentosa type 45. Three transcript variants encoding different isoforms have been found for CNGB1.

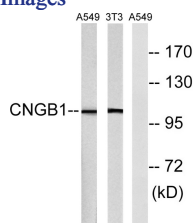
Recommended Dilution

WB: 1: 500 - 1: 2000

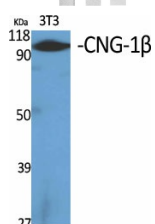
ELISA: 1: 10000

Not yet tested in other applications.

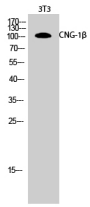
Images



Western blot analysis of lysates from NIH/3T3 and A549 cells, using CNGB1 Antibody. The lane on the right is blocked with the synthesized peptide.



Western Blot analysis of various cells using CNG-1 β Polyclonal Antibody



Western Blot analysis of 3T3 cells using CNG-1 β Polyclonal Antibody

Storage

-20°C for one year

501 Changsheng S Rd, Nanhu Dist, Jiaxing, Zhejiang, China

Tel: 86 21 31007137 | E-mail: save@bt-laboratory.com | www.bt-laboratory.com