

CNK1 Polyclonal Antibody

Description

Product type	Primary Antibody
Code	BT-AP02030
Host	Rabbit
Isotype	IgG
Size	20ul, 50ul, 100ul
Immunogen	The antiserum was produced against synthesized peptide derived from human CNKR1. AA range:491-540
Mol wt	79706
Species reactivity	Human, Mouse, Rat
Clonality	Polyclonal
Recommended application	WB, IHC-p, IF, ELISA
Concentration	1 mg/ml
Full name	CNK1 Antibody
Synonyms	CNKSR1; CNK1; Connector enhancer of kinase suppressor of ras 1; Connector enhancer of KSR 1; CNK homolog protein 1; CNK1; hCNK1; Connector enhancer of KSR-like

This product is for research use only, not for use in human, therapeutic or diagnostic procedure.

Background

CNKSR1 encodes connector enhancer of kinase suppressor of Ras 1 containing several motifs involved in protein-protein interaction, including PDZ, PH (Pleckstrin homology), and SAM (sterile alpha motif) domains. The encoded protein acts as a scaffold component for receptor tyrosine kinase signaling and may mediate crosstalk between different signaling pathways. Alternative splicing results in multiple transcript variants.

Recommended Dilution

WB: 1: 500 - 1: 2000

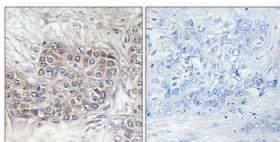
IHC: 1: 100 - 1: 300

IF: 1: 200 - 1: 1000

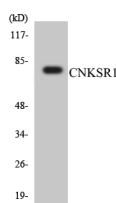
ELISA: 1: 10000

Not yet tested in other applications.

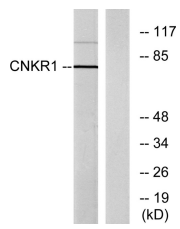
Images



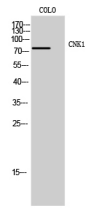
Immunohistochemical analysis of paraffin-embedded Human breast cancer. Antibody was diluted at 1:100(4° overnight). High-pressure and temperature Tris-EDTA,pH8.0 was used for antigen retrieval. Negative contrl (right) obtained from antibody was pre-absorbed by immunogen peptide.



Western blot analysis of the lysates from HT-29 cells using CNKSR1 antibody.



Western blot analysis of lysates from COLO205 cells, using CNKR1 Antibody. The lane on the right is blocked with the synthesized peptide.



Western Blot analysis of COLO cells using CNK1 Polyclonal Antibody

Storage

-20°C for one year

501 Changsheng S Rd, Nanhu Dist, Jiaxing, Zhejiang, China

Tel: 86 21 31007137 | E-mail: save@bt-laboratory.com | www.bt-laboratory.com