

## CNT2 Polyclonal Antibody

### Description

<b>Product type</b>	Primary Antibody
<b>Code</b>	BT-AP02040
<b>Host</b>	Rabbit
<b>Isotype</b>	IgG
<b>Size</b>	20ul, 50ul, 100ul
<b>Immunogen</b>	The antiserum was produced against synthesized peptide derived from human SLC28A2. AA range:371-420
<b>Mol wt</b>	71926
<b>Species reactivity</b>	Human, Mouse, Rat
<b>Clonality</b>	Polyclonal
<b>Recommended application</b>	WB, IHC-p, ELISA
<b>Concentration</b>	1 mg/ml
<b>Full name</b>	CNT2 Antibody
<b>Synonyms</b>	SLC28A2; CNT2; Sodium/nucleoside cotransporter 2; Concentrative nucleoside transporter 2; CNT 2; hCNT2; Na(+)/nucleoside cotransporter 2; Sodium-coupled nucleoside transporter 2; Sodium/purine nucleos

**This product is for research use only, not for use in human, therapeutic or diagnostic procedure.**

### Background

The concentrative nucleoside transporter (CNT) family comprises three members: CNT1, CNT2 and CNT3. CNT2 participates in the absorption and disposition of endogenous nucleosides and mediates the first step of nucleotide biosynthesis. CNT2 levels are highly dependent on insulin (but not glucose) concentration, and the protein is under the control of the Adenosine 1 receptor. CNT family members are imperative in the response of cells to a variety of anticancer and antiviral nucleoside analogs, as the CNT proteins modulate their entry into target tissues. Increasing evidence also suggests that CNT2 may have a role in energy metabolism because activation of CNT2 relies on the opening of ATP-sensitive K<sup>+</sup> channels.

### Recommended Dilution

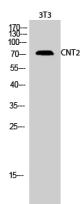
WB: 1: 500 - 1: 2000

IHC: 1: 100 - 1: 300

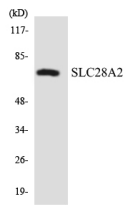
ELISA: 1: 10000

Not yet tested in other applications.

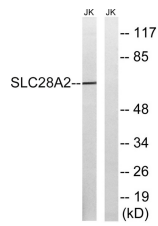
### Images



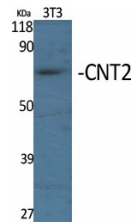
Western Blot analysis of 3T3 cells using CNT2 Polyclonal Antibody



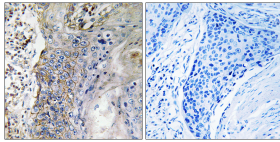
Western blot analysis of the lysates from HepG2 cells using SLC28A2 antibody.



Western blot analysis of lysates from Jurkat cells, using SLC28A2 Antibody. The lane on the right is blocked with the synthesized peptide.



Western Blot analysis of various cells using CNT2 Polyclonal Antibody



Immunohistochemistry analysis of paraffin-embedded human lung carcinoma tissue, using SLC28A2 Antibody. The picture on the right is blocked with the synthesized peptide.

### Storage

-20°C for one year

501 Changsheng S Rd, Nanhu Dist, Jiaxing, Zhejiang, China

Tel: 86 21 31007137 | E-mail: [save@bt-laboratory.com](mailto:save@bt-laboratory.com) | [www.bt-laboratory.com](http://www.bt-laboratory.com)