

CNTD2 Polyclonal Antibody

Description

Product type	Primary Antibody
Code	BT-AP02041
Host	Rabbit
Isotype	IgG
Size	20ul, 50ul, 100ul
Immunogen	The antiserum was produced against synthesized peptide derived from human CNTD2. AA range:51-100
Mol wt	16695
Species reactivity	Human
Clonality	Polyclonal
Recommended application	IHC-p, ELISA
Concentration	1 mg/ml
Full name	CNTD2 Antibody
Synonyms	CNTD2; Cyclin N-terminal domain-containing protein 2

This product is for research use only, not for use in human, therapeutic or diagnostic procedure.

Background

CNTD2 (Cyclin N-Terminal Domain Containing 2) is a Protein Coding gene. Diseases associated with CNTD2 include cataract 27, nuclear progressive. GO annotations related to this gene include protein kinase binding.

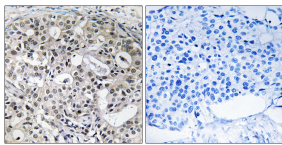
Recommended Dilution

IHC: 1: 100 - 1: 300

ELISA: 1: 40000

Not yet tested in other applications.

Images



Immunohistochemistry analysis of paraffin-embedded human breast carcinoma, using CNTD2 Antibody. The picture on the right is blocked with the synthesized peptide.

Storage

-20°C for one year

501 Changsheng S Rd, Nanhu Dist, Jiaxing, Zhejiang, China

Tel: 86 21 31007137 | E-mail: save@bt-laboratory.com | www.bt-laboratory.com