

IFNA5 Polyclonal Antibody

Description

Product type	Primary Antibody
Code	BT-AP02043
Host	Rabbit
Isotype	IgG
Size	20ul, 50ul, 100ul
Immunogen	Synthesized peptide derived from human protein . at AA range: 30-110
Mol wt	N/A
Species reactivity	Human, Rat, Mouse
Clonality	Polyclonal
Recommended application	WB, ELISA
Concentration	1 mg/ml
Full name	Interferon alpha-5
Synonyms	Interferon alpha-5 (IFN-alpha-5;Interferon alpha-61;Interferon alpha-G;LeIF G)

This product is for research use only, not for use in human, therapeutic or diagnostic procedure.

Background

Produced by macrophages| IFN-alpha have antiviral activities. Interferon stimulates the production of two enzymes: a protein kinase and an oligoadenylate synthetase.|Belongs to the alpha/beta interferon family.|

Recommended Dilution

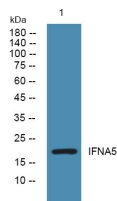
WB: 1: 500 - 1: 2000

ELISA: 1: 5000 - 1: 20000

ELISA: 1: 20000

Not yet tested in other applications.

Images



Western blot analysis of lysates from Jarkat cells, primary antibody was diluted at 1:1000, 4°C overnight

Storage

-20°C for 1 year