

COL12A1 Polyclonal Antibody

Description

Product type	Primary Antibody
Code	BT-AP02061
Host	Rabbit
Isotype	IgG
Size	20ul, 50ul, 100ul
Immunogen	The antiserum was produced against synthesized peptide derived from human Collagen XII alpha1. AA range:1481-1530
Mol wt	333147
Species reactivity	Human
Clonality	Polyclonal
Recommended application	IHC-p, IF, ELISA
Concentration	1 mg/ml
Full name	COL12A1 Antibody
Synonyms	COL12A1; COL12A1L; Collagen alpha-1(XII) chain

This product is for research use only, not for use in human, therapeutic or diagnostic procedure.

Background

COL12A1 encodes the alpha chain of type XII collagen, a member of the FACIT (fibril-associated collagens with interrupted triple helices) collagen family. Type XII collagen is a homotrimer found in association with type I collagen, an association that is thought to modify the interactions between collagen I fibrils and the surrounding matrix. Alternatively spliced transcript variants encoding different isoforms have been identified.

Recommended Dilution

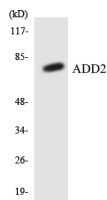
IHC: 1: 100 - 1: 300

IF: 1: 200 - 1: 1000

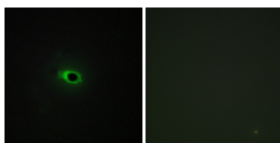
ELISA: 1: 10000

Not yet tested in other applications.

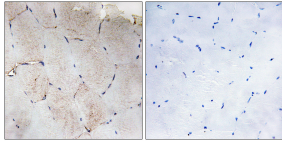
Images



Western blot analysis of the lysates from HeLa cells using ADD2 antibody.



Immunofluorescence analysis of COS7 cells, using Collagen XII alpha1 Antibody. The picture on the right is blocked with the synthesized peptide.



Immunohistochemistry analysis of paraffin-embedded human skeletal muscle tissue, using Collagen XII alpha1 Antibody. The picture on the right is blocked with the synthesized peptide.

Storage

-20°C for one year

501 Changsheng S Rd, Nanhu Dist, Jiaxing, Zhejiang, China

Tel: 86 21 31007137 | E-mail: save@bt-laboratory.com | www.bt-laboratory.com