

COL13A1 Polyclonal Antibody

Description

Product type	Primary Antibody
Code	BT-AP02063
Host	Rabbit
Isotype	IgG
Size	20ul, 50ul, 100ul
Immunogen	The antiserum was produced against synthesized peptide derived from human Collagen XIII alpha1. AA range:641-690
Mol wt	69950
Species reactivity	Human, Mouse
Clonality	Polyclonal
Recommended application	IF, ELISA
Concentration	1 mg/ml
Full name	COL13A1 Antibody
Synonyms	COL13A1; Collagen alpha-1(XIII) chain; COLXIII A1

This product is for research use only, not for use in human, therapeutic or diagnostic procedure.

Background

COL13A1 encodes the alpha chain of one of the nonfibrillar collagens. The function of this gene product is not known, however, it has been detected at low levels in all connective tissue-producing cells so it may serve a general function in connective tissues. Unlike most of the collagens, which are secreted into the extracellular matrix, collagen XIII contains a transmembrane domain and the protein has been localized to the plasma membrane. The transcripts for this gene undergo complex and extensive splicing involving at least eight exons. Like other collagens, collagen XIII is a trimer; it is not known whether this trimer is composed of one or more than one alpha chain isomer. A number of alternatively spliced transcript variants have been described, but the full length nature of some of them has not been determined.

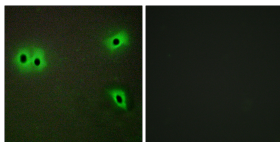
Recommended Dilution

IF: 1: 200 - 1: 1000

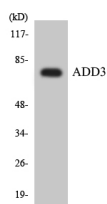
ELISA: 1: 20000

Not yet tested in other applications.

Images



Immunofluorescence analysis of A549 cells, using Collagen XIII alpha1 Antibody. The picture on the right is blocked with the synthesized peptide.



Western blot analysis of the lysates from HT-29 cells using ADD3 antibody.

Storage

-20°C for one year

501 Changsheng S Rd, Nanhu Dist, Jiaxing, Zhejiang, China

Tel: 86 21 31007137 | E-mail: save@bt-laboratory.com | www.bt-laboratory.com