

COL14A1 Polyclonal Antibody

Description

Product type	Primary Antibody
Code	BT-AP02065
Host	Rabbit
Isotype	IgG
Size	20ul, 50ul, 100ul
Immunogen	The antiserum was produced against synthesized peptide derived from human Collagen XIV alpha1. AA range:71-120
Mol wt	193515
Species reactivity	Human, Mouse
Clonality	Polyclonal
Recommended application	IHC-p, IF, ELISA
Concentration	1 mg/ml
Full name	COL14A1 Antibody
Synonyms	COL14A1; UND; Collagen alpha-1(XIV) chain; Undulin

This product is for research use only, not for use in human, therapeutic or diagnostic procedure.

Background

COL14A1 (collagen type XIV alpha 1 chain) encodes the alpha chain of type XIV collagen, a member of the FACIT (fibril-associated collagens with interrupted triple helices) collagen family. Type XIV collagen interacts with the fibril surface and is involved in the regulation of fibrillogenesis.

Recommended Dilution

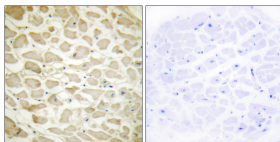
IHC: 1: 100 - 1: 300

IF: 1: 200 - 1: 1000

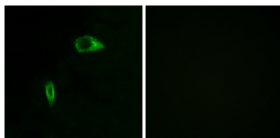
ELISA: 1: 40000

Not yet tested in other applications.

Images



Immunohistochemistry analysis of paraffin-embedded human heart tissue, using Collagen XIV alpha1 Antibody. The picture on the right is blocked with the synthesized peptide.



Immunofluorescence analysis of HeLa cells, using Collagen XIV alpha1 Antibody. The picture on the right is blocked with the synthesized peptide.

Storage

-20°C for one year