

COL16A1 Polyclonal Antibody

Description

Product type	Primary Antibody
Code	BT-AP02067
Host	Rabbit
Isotype	IgG
Size	20ul, 50ul, 100ul
Immunogen	The antiserum was produced against synthesized peptide derived from human Collagen XVI alpha1. AA range:1121-1170
Mol wt	157751
Species reactivity	Human, Mouse
Clonality	Polyclonal
Recommended application	IHC-p, ELISA
Concentration	1 mg/ml
Full name	COL16A1 Antibody
Synonyms	COL16A1; FP1572; Collagen alpha-1(XVI) chain

This product is for research use only, not for use in human, therapeutic or diagnostic procedure.

Background

COL16A1 encodes the alpha chain of type XVI collagen, a member of the FACIT collagen family (fibril-associated collagens with interrupted helices). Members of this collagen family are found in association with fibril-forming collagens such as type I and II, and serve to maintain the integrity of the extracellular matrix. High levels of type XVI collagen have been found in fibroblasts and keratinocytes, and in smooth muscle and amnion.

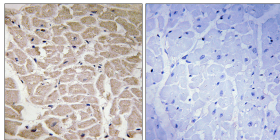
Recommended Dilution

IHC: 1: 100 - 1: 300

ELISA: 1: 5000

Not yet tested in other applications.

Images



Immunohistochemistry analysis of paraffin-embedded human heart tissue, using Collagen XVI alpha1 Antibody. The picture on the right is blocked with the synthesized peptide.

Storage

-20°C for one year