

COL17A1 Polyclonal Antibody

Description

Product type	Primary Antibody
Code	BT-AP02068
Host	Rabbit
Isotype	IgG
Size	20ul, 50ul, 100ul
Immunogen	Synthesized peptide derived from COL17A1 . at AA range: 1-80
Mol wt	150419
Species reactivity	Human, Mouse
Clonality	Polyclonal
Recommended application	IHC-p, ELISA
Concentration	1 mg/ml
Full name	COL17A1 Antibody
Synonyms	COL17A1; BP180; BPAG2; Collagen alpha-1(XVII) chain; 180 kDa bullous pemphigoid antigen 2; Bullous pemphigoid antigen 2

This product is for research use only, not for use in human, therapeutic or diagnostic procedure.

Background

COL17A1 encodes the alpha chain of type XVII collagen. Unlike most collagens, collagen XVII is a transmembrane protein. Collagen XVII is a structural component of hemidesmosomes, multiprotein complexes at the dermal-epidermal basement membrane zone that mediate adhesion of keratinocytes to the underlying membrane. Mutations in this gene are associated with both generalized atrophic benign and junctional epidermolysis bullosa. Two homotrimeric forms of type XVII collagen exist. The full length form is the transmembrane protein. A soluble form, referred to as either ectodomain or LAD-1, is generated by proteolytic processing of the full length form.

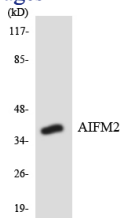
Recommended Dilution

IHC: 1: 100 - 1: 300

ELISA: 1: 40000

Not yet tested in other applications.

Images



Western blot analysis of the lysates from HT-29 cells using AIFM2 antibody.

Storage

-20°C for one year