

## COL18A1 Polyclonal Antibody

### Description

<b>Product type</b>	Primary Antibody
<b>Code</b>	BT-AP02071
<b>Host</b>	Rabbit
<b>Isotype</b>	IgG
<b>Size</b>	20ul, 50ul, 100ul
<b>Immunogen</b>	The antiserum was produced against synthesized peptide derived from human Collagen alpha1 XVIII. AA range:1301-1350
<b>Mol wt</b>	178160
<b>Species reactivity</b>	Human, Mouse
<b>Clonality</b>	Polyclonal
<b>Recommended application</b>	IHC-p, ELISA
<b>Concentration</b>	1 mg/ml
<b>Full name</b>	COL18A1 Antibody
<b>Synonyms</b>	COL18A1; Collagen alpha-1(XVIII) chain

**This product is for research use only, not for use in human, therapeutic or diagnostic procedure.**

### Background

COL18A1 (collagen type XVIII alpha 1 chain) encodes the alpha chain of type XVIII collagen. This collagen is one of the multiplexins, extracellular matrix proteins that contain multiple triple-helix domains (collagenous domains) interrupted by non-collagenous domains. A long isoform of the protein has an N-terminal domain that is homologous to the extracellular part of frizzled receptors. Proteolytic processing at several endogenous cleavage sites in the C-terminal domain results in production of endostatin, a potent antiangiogenic protein that is able to inhibit angiogenesis and tumor growth. Mutations in COL18A1 are associated with Knobloch syndrome. The main features of this syndrome involve retinal abnormalities, so type XVIII collagen may play an important role in retinal structure and in neural tube closure. Alternative splicing results in multiple transcript variants.

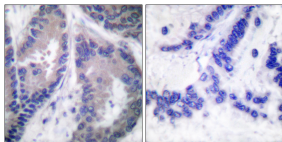
### Recommended Dilution

IHC: 1: 100 - 1: 300

ELISA: 1: 20000

Not yet tested in other applications.

### Images



Immunohistochemistry analysis of paraffin-embedded human lung carcinoma tissue, using Collagen alpha1 XVIII Antibody. The picture on the right is blocked with the synthesized peptide.

### Storage

-20°C for one year