

COL4A5 Polyclonal Antibody

Description

Product type	Primary Antibody
Code	BT-AP02086
Host	Rabbit
Isotype	IgG
Size	20ul, 50ul, 100ul
Immunogen	The antiserum was produced against synthesized peptide derived from human Collagen IV alpha5. AA range:21-70
Mol wt	161044
Species reactivity	Human, Mouse
Clonality	Polyclonal
Recommended application	IHC-p, IF, WB, ELISA
Concentration	1 mg/ml
Full name	COL4A5 Antibody
Synonyms	COL4A5; Collagen alpha-5(IV) chain

This product is for research use only, not for use in human, therapeutic or diagnostic procedure.

Background

COL4A5 encodes one of the six subunits of type IV collagen, the major structural component of basement membranes. Mutations in this gene are associated with X-linked Alport syndrome, also known as hereditary nephritis. Like the other members of the type IV collagen gene family, this gene is organized in a head-to-head conformation with another type IV collagen gene so that each gene pair shares a common promoter. Alternatively spliced transcript variants have been identified for this gene.

Recommended Dilution

WB: 1: 500 - 2000

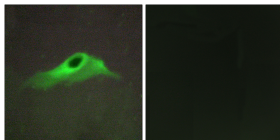
IF: 1: 200 - 1: 1000

ELISA: 1: 10000

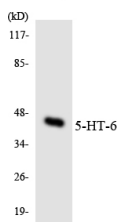
IHC: 1: 100 - 1: 300

Not yet tested in other applications.

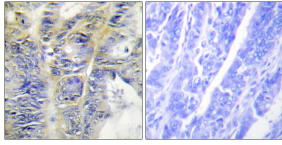
Images



Immunofluorescence analysis of HeLa cells, using Collagen IV alpha5 Antibody. The picture on the right is blocked with the synthesized peptide.



Western blot analysis of the lysates from COLO205 cells using 5-HT-6 antibody.



Immunohistochemistry analysis of paraffin-embedded human colon carcinoma tissue, using Collagen IV alpha5 Antibody. The picture on the right is blocked with the synthesized peptide.

Storage

-20°C for one year

501 Changsheng S Rd, Nanhu Dist, Jiaxing, Zhejiang, China

Tel: 86 21 31007137 | E-mail: save@bt-laboratory.com | www.bt-laboratory.com