

COL4A6 Polyclonal Antibody

Description

Product type	Primary Antibody
Code	BT-AP02087
Host	Rabbit
Isotype	IgG
Size	20ul, 50ul, 100ul
Immunogen	The antiserum was produced against synthesized peptide derived from human Collagen IV alpha6. AA range:1201-1250
Mol wt	163807
Species reactivity	Human
Clonality	Polyclonal
Recommended application	WB, IHC-p, IF, ELISA
Concentration	1 mg/ml
Full name	COL4A6 Antibody
Synonyms	COL4A6; Collagen alpha-6(IV) chain

This product is for research use only, not for use in human, therapeutic or diagnostic procedure.

Background

COL4A6 encodes one of the six subunits of type IV collagen, the major structural component of basement membranes. Like the other members of the type IV collagen gene family, COL4A6 is organized in a head-to-head conformation with another type IV collagen gene, alpha 5 type IV collagen, so that the gene pair shares a common promoter. Deletions in the alpha 5 gene that extend into the alpha 6 gene result in diffuse leiomyomatosis accompanying the X-linked Alport syndrome caused by the deletion in the alpha 5 gene. Alternative splicing results in multiple transcript variants encoding different isoforms.

Recommended Dilution

WB: 1: 500 - 1: 2000

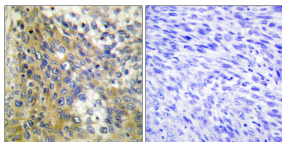
IHC: 1: 100 - 1: 300

IF: 1: 200 - 1: 1000

ELISA: 1: 40000

Not yet tested in other applications.

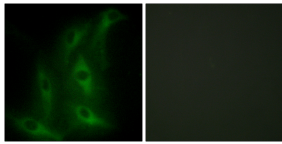
Images



Immunohistochemistry analysis of paraffin-embedded human cervix carcinoma tissue, using Collagen IV alpha6 Antibody. The picture on the right is blocked with the synthesized peptide.



Western Blot analysis of various cells using COL4A6 Polyclonal Antibody diluted at 1:500



Immunofluorescence analysis of HeLa cells, using Collagen IV alpha6 Antibody. The picture on the right is blocked with the synthesized peptide.

Storage

-20°C for one year

501 Changsheng S Rd, Nanhu Dist, Jiaxing, Zhejiang, China

Tel: 86 21 31007137 | E-mail: save@bt-laboratory.com | www.bt-laboratory.com