

Collagen alpha-1(XXVIII)Polyclonal Antibody

Description

Product type	Primary Antibody
Code	BT-AP02099
Host	Rabbit
Isotype	IgG
Size	20ul, 50ul, 100ul
Immunogen	The antiserum was produced against synthesized peptide derived from the N-terminal region of human COL28A1. AA range:111-160
Mol wt	116657
Species reactivity	Human, Mouse
Clonality	Polyclonal
Recommended application	WB, ELISA
Concentration	1 mg/ml
Full name	Collagen alpha-1(XXVIII) Antibody
Synonyms	Collagen alpha-1(XXVIII) chain

This product is for research use only, not for use in human, therapeutic or diagnostic procedure.

Background

COL28A1 (Collagen Type XXVIII Alpha 1) is a Protein Coding gene. Among its related pathways are Collagen biosynthesis and modifying enzymes and Degradation of the extracellular matrix. GO annotations related to this gene include serine-type endopeptidase inhibitor activity. An important paralog of this gene is COL6A1.

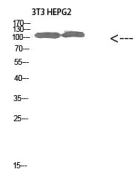
Recommended Dilution

WB: 1: 500 - 2000

ELISA: 1: 10000 - 20000

Not yet tested in other applications.

Images



Western Blot analysis of 3T3 HEPG2 cells using Collagen alpha-1(XXVIII) Polyclonal Antibody diluted at 1:1000.
Secondary antibody was diluted at 1:20000

Storage

-20°C for one year