

Collagen I Polyclonal Antibody

Description

Product type	Primary Antibody
Code	BT-AP02102
Host	Rabbit
Isotype	IgG
Size	20ul, 50ul, 100ul
Immunogen	Synthesized peptide derived from Collagen I . at AA range: 1200-1217
Mol wt	116657
Species reactivity	Human, Mouse, Rat
Clonality	Polyclonal
Recommended application	WB, ELISA
Concentration	1 mg/ml
Full name	Collagen I Antibody
Synonyms	collagen, type I, alpha 2

This product is for research use only, not for use in human, therapeutic or diagnostic procedure.

Background

COL28A1 (Collagen Type XXVIII Alpha 1) is a Protein Coding gene. Among its related pathways are Collagen biosynthesis and modifying enzymes and Degradation of the extracellular matrix. GO annotations related to this gene include serine-type endopeptidase inhibitor activity. An important paralog of this gene is COL6A1.

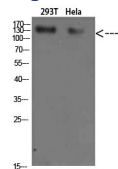
Recommended Dilution

WB: 1: 500 - 2000

ELISA: 1: 10000 - 20000

Not yet tested in other applications.

Images



Western Blot analysis of 293T HeLa cells using Collagen I Polyclonal Antibody diluted at 1:500. Secondary antibody was diluted at 1:20000

Storage

-20°C for one year