

IGFL3 Polyclonal Antibody

Description

Product type	Primary Antibody
Code	BT-AP02105
Host	Rabbit
Isotype	IgG
Size	20ul, 50ul, 100ul
Immunogen	Synthesized peptide derived from human protein . at AA range: 10-90
Mol wt	N/A
Species reactivity	Human, Rat, Mouse
Clonality	Polyclonal
Recommended application	WB, ELISA
Concentration	1 mg/ml
Full name	Insulin growth factor-like family member 3
Synonyms	Insulin growth factor-like family member 3

This product is for research use only, not for use in human, therapeutic or diagnostic procedure.

Background

IGFL3 belongs to the insulin-like growth factor (IGF; see MIM 147440) family of signaling molecules that play critical roles in cellular energy metabolism and in growth and development| especially prenatal growth (Emtage et al.| 2006

Recommended Dilution

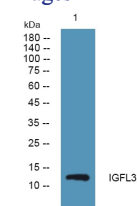
WB: 1: 500 - 1: 2000

ELISA: 1: 5000 - 1: 20000

ELISA: 1: 20000

Not yet tested in other applications.

Images



Western blot analysis of lysates from HCT116 cells, primary antibody was diluted at 1:1000, 4°C overnight

Storage

-20°C for 1 year