

Connexin 45 Polyclonal Antibody

Description

Product type	Primary Antibody
Code	BT-AP02114
Host	Rabbit
Isotype	IgG
Size	20ul, 50ul, 100ul
Immunogen	The antiserum was produced against synthesized peptide derived from human GJC1. AA range:231-280
Mol wt	45483
Species reactivity	Human, Mouse, Rat
Clonality	Polyclonal
Recommended application	WB, ELISA
Concentration	1 mg/ml
Full name	Connexin 45 Antibody
Synonyms	GJC1; GJA7; Gap junction gamma-1 protein; Connexin-45; Cx45; Gap junction alpha-7 protein

This product is for research use only, not for use in human, therapeutic or diagnostic procedure.

Background

GJC1 is a member of the connexin gene family. The gap junction protein gamma 1 is a component of gap junctions, which are composed of arrays of intercellular channels that provide a route for the diffusion of low molecular weight materials from cell to cell. Alternatively spliced transcript variants encoding the same isoform have been described.

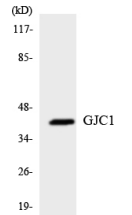
Recommended Dilution

WB: 1: 500 - 1: 2000

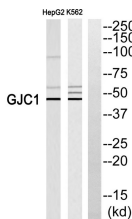
ELISA: 1: 40000

Not yet tested in other applications.

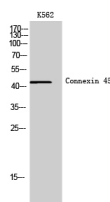
Images



Western blot analysis of the lysates from K562 cells using GJC1 antibody.



Western blot analysis of GJC1 Antibody. The lane on the right is blocked with the GJC1 peptide.



Western Blot analysis of K562 cells using Connexin 45 Polyclonal Antibody

Storage

-20°C for one year

501 Changsheng S Rd, Nanhu Dist, Jiaxing, Zhejiang, China

Tel: 86 21 31007137 | E-mail: save@bt-laboratory.com | www.bt-laboratory.com