

Connexin 47 Polyclonal Antibody

Description

Product type	Primary Antibody
Code	BT-AP02116
Host	Rabbit
Isotype	IgG
Size	20ul, 50ul, 100ul
Immunogen	The antiserum was produced against synthesized peptide derived from human CXG2. AA range:21-70
Mol wt	47002
Species reactivity	Human
Clonality	Polyclonal
Recommended application	WB, IF, ELISA
Concentration	1 mg/ml
Full name	Connexin 47 Antibody
Synonyms	GJC2; GJA12; Gap junction gamma-2 protein; Connexin-46.6; Cx46.6; Connexin-47; Cx47; Gap junction alpha-12 protein

This product is for research use only, not for use in human, therapeutic or diagnostic procedure.

Background

GJC2 (gap junction protein gamma 2) encodes a gap junction protein. Gap junction proteins are members of a large family of homologous connexins and comprise 4 transmembrane, 2 extracellular, and 3 cytoplasmic domains. GJC2 plays a key role in central myelination and is involved in peripheral myelination in humans. Defects in GJC2 are the cause of autosomal recessive Pelizaeus-Merzbacher-like disease-1.

Recommended Dilution

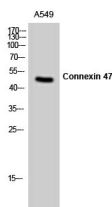
WB: 1: 500 - 1: 2000

IF: 1: 200 - 1: 1000

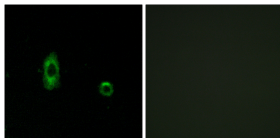
ELISA: 1: 10000

Not yet tested in other applications.

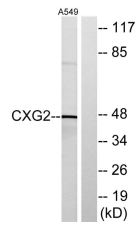
Images



Western Blot analysis of A549 cells using Connexin 47 Polyclonal Antibody



Immunofluorescence analysis of A549 cells, using CXG2 Antibody. The picture on the right is blocked with the synthesized peptide.



Western blot analysis of lysates from A549 cells, using CXG2 Antibody. The lane on the right is blocked with the synthesized peptide.

Storage

-20°C for one year

501 Changsheng S Rd, Nanhu Dist, Jiaxing, Zhejiang, China

Tel: 86 21 31007137 | E-mail: save@bt-laboratory.com | www.bt-laboratory.com