

Connexin-40 Polyclonal Antibody

Description

Product type	Primary Antibody
Code	BT-AP02120
Host	Rabbit
Isotype	IgG
Size	20ul, 50ul, 100ul
Immunogen	The antiserum was produced against synthesized peptide derived from the N-terminal region of human GJA5. AA range:21-70
Mol wt	40380
Species reactivity	Human, Mouse, Rat
Clonality	Polyclonal
Recommended application	WB, ELISA
Concentration	1 mg/ml
Full name	Connexin-40 Antibody
Synonyms	GJA5; Gap junction alpha-5 protein; Connexin-40; Cx40

This product is for research use only, not for use in human, therapeutic or diagnostic procedure.

Background

GJA5 is a member of the connexin gene family. The gap junction protein alpha 5 is a component of gap junctions, which are composed of arrays of intercellular channels that provide a route for the diffusion of low molecular weight materials from cell to cell. Mutations in this gene may be associated with atrial fibrillation. Alternatively spliced transcript variants encoding the same isoform have been described.

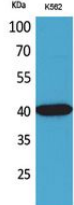
Recommended Dilution

WB: 1: 500 - 1: 2000

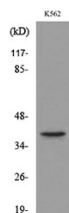
ELISA: 1: 20000

Not yet tested in other applications.

Images



Western Blot analysis of K562 cells using Connexin-40 Polyclonal Antibody. Secondary antibody was diluted at 1:20000



Western blot analysis of lysate from K562 cells, using GJA5 Antibody.

Storage

-20°C for one year

501 Changsheng S Rd, Nanhu Dist, Jiaxing, Zhejiang, China

Tel: 86 21 31007137 | E-mail: save@bt-laboratory.com | www.bt-laboratory.com