

Connexin-45 Polyclonal Antibody

Description

| | |
|--------------------------------|---|
| Product type | Primary Antibody |
| Code | BT-AP02121 |
| Host | Rabbit |
| Isotype | IgG |
| Size | 20ul, 50ul, 100ul |
| Immunogen | The antiserum was produced against synthesized peptide derived from human Connexin-45. AA range:312-361 |
| Mol wt | 45483 |
| Species reactivity | Human, Mouse, Rat |
| Clonality | Polyclonal |
| Recommended application | WB, IHC-p, ELISA |
| Concentration | 1 mg/ml |
| Full name | Connexin-45 Antibody |
| Synonyms | GJC1; GJA7; Gap junction gamma-1 protein; Connexin-45; Cx45; Gap junction alpha-7 protein |

This product is for research use only, not for use in human, therapeutic or diagnostic procedure.

Background

GJC1 is a member of the connexin gene family. The gap junction protein gamma 2 is a component of gap junctions, which are composed of arrays of intercellular channels that provide a route for the diffusion of low molecular weight materials from cell to cell. Alternatively spliced transcript variants encoding the same isoform have been described.

Recommended Dilution

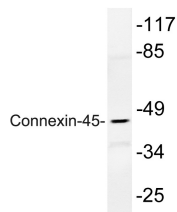
WB: 1: 500 - 1: 2000

IHC: 1: 100 - 1: 300

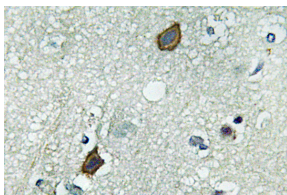
ELISA: 1: 40000

Not yet tested in other applications.

Images

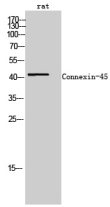


Western blot analysis of lysate from rat heart, using Connexin-45 antibody.



Immunohistochemistry analysis of Connexin-45 antibody in paraffin-embedded human brain tissue.

Western Blot analysis of rat cells using Connexin-45 Polyclonal Antibody



Storage

-20°C for one year

501 Changsheng S Rd, Nanhu Dist, Jiaxing, Zhejiang, China

Tel: 86 21 31007137 | E-mail: save@bt-laboratory.com | www.bt-laboratory.com