

## Contactin 1 Polyclonal Antibody

### Description

Product type	Primary Antibody
Code	BT-AP02122
Host	Rabbit
Isotype	IgG
Size	20ul, 50ul, 100ul
Immunogen	Synthesized peptide derived from the N-terminal region of human Contactin 1.
Mol wt	113320
Species reactivity	Human, Mouse, Rat
Clonality	Polyclonal
Recommended application	WB, ELISA
Concentration	1 mg/ml
Full name	Contactin 1 Antibody
Synonyms	CNTN1; Contactin-1; Glycoprotein gp135; Neural cell surface protein F3

This product is for research use only, not for use in human, therapeutic or diagnostic procedure.

### Background

Contactin-1 encoded by CNTN1 is a member of the immunoglobulin superfamily. It is a glycosylphosphatidylinositol (GPI)-anchored neuronal membrane protein that functions as a cell adhesion molecule. It may play a role in the formation of axon connections in the developing nervous system. Multiple alternatively spliced transcript variants encoding different isoforms have been found for this gene.

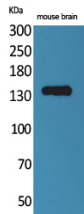
### Recommended Dilution

WB: 1: 500 - 1: 2000

ELISA: 1: 20000

Not yet tested in other applications.

### Images



Western Blot analysis of mouse brain cells using Contactin 1 Polyclonal Antibody. Secondary antibody was diluted at 1:20000

### Storage

-20°C for one year