

Contactin 2 Polyclonal Antibody

Description

Product type	Primary Antibody
Code	BT-AP02123
Host	Rabbit
Isotype	IgG
Size	20ul, 50ul, 100ul
Immunogen	The antiserum was produced against synthesized peptide derived from human CNTN2. AA range:111-160
Mol wt	113393
Species reactivity	Human, Mouse, Rat
Clonality	Polyclonal
Recommended application	WB, ELISA
Concentration	1 mg/ml
Full name	Contactin 2 Antibody
Synonyms	CNTN2; AXT; TAG1; TAX1; Contactin-2; Axonal glycoprotein TAG-1; Axonin-1; Transient axonal glycoprotein 1; TAX-1

This product is for research use only, not for use in human, therapeutic or diagnostic procedure.

Background

The protein encoded by CNTN2 (contactin 2) is a member of the immunoglobulin superfamily. It is a glycosylphosphatidylinositol (GPI)-anchored neuronal membrane protein that functions as a cell adhesion molecule. It may play a role in the formation of axon connections in the developing nervous system. It may also be involved in glial tumorigenesis and may provide a potential target for therapeutic intervention.

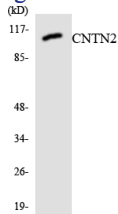
Recommended Dilution

WB: 1: 500 - 1: 2000

ELISA: 1: 40000

Not yet tested in other applications.

Images



Western blot analysis of the lysates from HUVEC cells using CNTN2 antibody.

Storage

-20°C for one year