

Contactin 5 Polyclonal Antibody

Description

Product type	Primary Antibody
Code	BT-AP02125
Host	Rabbit
Isotype	IgG
Size	20ul, 50ul, 100ul
Immunogen	The antiserum was produced against synthesized peptide derived from human CNTN5. AA range:891-940
Mol wt	120686
Species reactivity	Human
Clonality	Polyclonal
Recommended application	IF, IHC-p, ELISA
Concentration	1 mg/ml
Full name	Contactin 5 Antibody
Synonyms	CNTN5; Contactin-5; Neural recognition molecule NB-2; hNB-2

This product is for research use only, not for use in human, therapeutic or diagnostic procedure.

Background

The protein encoded by CNTN5 (contactin 5) is a member of the immunoglobulin superfamily, and contactin family, which mediate cell surface interactions during nervous system development. This protein is a glycosylphosphatidylinositol (GPI)-anchored neuronal membrane protein that functions as a cell adhesion molecule. It may play a role in the formation of axon connections in the developing nervous system. Alternatively spliced transcript variants encoding different isoforms have been described for CNTN5.

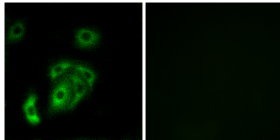
Recommended Dilution

IF: 1: 200 - 1: 1000

ELISA: 1: 20000

Not yet tested in other applications.

Images



Immunofluorescence analysis of A549 cells, using CNTN5 Antibody. The picture on the right is blocked with the synthesized peptide.

Storage

-20°C for one year

501 Changsheng S Rd, Nanhu Dist, Jiaxing, Zhejiang, China

Tel: 86 21 31007137 | E-mail: save@bt-laboratory.com | www.bt-laboratory.com