

COP Zeta1 Polyclonal Antibody

Description

Product type	Primary Antibody
Code	BT-AP02127
Host	Rabbit
Isotype	IgG
Size	20ul, 50ul, 100ul
Immunogen	The antiserum was produced against synthesized peptide derived from human COPZ1. AA range:11-60
Mol wt	20198
Species reactivity	Human, Mouse, Monkey
Clonality	Polyclonal
Recommended application	WB, IHC-p, ELISA
Concentration	1 mg/ml
Full name	COP zeta1 Antibody
Synonyms	COPZ1; COPZ; CGI-120; HSPC181; Coatamer subunit zeta-1; Zeta-1-coat protein; Zeta-1 COP

This product is for research use only, not for use in human, therapeutic or diagnostic procedure.

Background

COPZ1 encodes a subunit of the cytoplasmic coatamer protein complex, which is involved in autophagy and intracellular protein trafficking. The coatamer protein complex is comprised of seven subunits and functions as the coat protein of coat protein complex (COP) I-vesicles. Alternative splicing results in multiple transcript variants.

Recommended Dilution

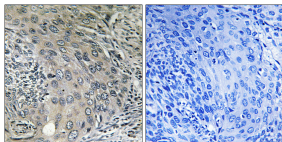
WB: 1: 500 - 1: 2000

IHC: 1: 100 - 1: 300

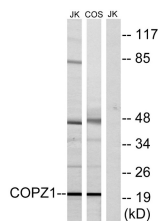
ELISA: 1: 10000

Not yet tested in other applications.

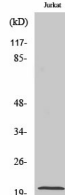
Images



Immunohistochemistry analysis of paraffin-embedded human cervix carcinoma tissue, using COPZ1 Antibody. The picture on the right is blocked with the synthesized peptide.



Western blot analysis of lysates from Jurkat and COS cells, using COPZ1 Antibody. The lane on the right is blocked with the synthesized peptide.



Western Blot analysis of various cells using COP ζ1 Polyclonal Antibody diluted at 1:500

Storage

-20°C for one year

501 Changsheng S Rd, Nanhu Dist, Jiaxing, Zhejiang, China

Tel: 86 21 31007137 | E-mail: save@bt-laboratory.com | www.bt-laboratory.com