

COP1 Polyclonal Antibody

Description

Product type	Primary Antibody
Code	BT-AP02129
Host	Rabbit
Isotype	IgG
Size	20ul, 50ul, 100ul
Immunogen	The antiserum was produced against synthesized peptide derived from human RFWD2. AA range:353-402
Mol wt	80474
Species reactivity	Human, Mouse
Clonality	Polyclonal
Recommended application	WB, ELISA
Concentration	1 mg/ml
Full name	COP1 Antibody
Synonyms	RFWD2; COP1; RNF200; E3 ubiquitin-protein ligase RFWD2; Constitutive photomorphogenesis protein 1 homolog; hCOP1; RING finger and WD repeat domain protein 2; RING finger protein 200

This product is for research use only, not for use in human, therapeutic or diagnostic procedure.

Background

RFWD2 (Ring Finger And WD Repeat Domain 2) is a Protein Coding gene. Among its related pathways are p53 signaling pathway and Antigen processing- Ubiquitination and Proteasome degradation. GO annotations related to this gene include ligase activity and ubiquitin protein ligase activity. An important paralog of this gene is RBBP4.

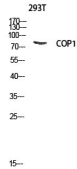
Recommended Dilution

WB: 1: 500 - 1: 2000

ELISA: 1: 40000

Not yet tested in other applications.

Images



Western blot analysis of 293T lysis using COP1 antibody. Antibody was diluted at 1:1000

Storage

-20°C for one year