

Coronin 1A Polyclonal Antibody

Description

Product type	Primary Antibody
Code	BT-AP02135
Host	Rabbit
Isotype	IgG
Size	20ul, 50ul, 100ul
Immunogen	Synthesized peptide derived from Coronin 1A . at AA range: 150-230
Mol wt	51026
Species reactivity	Human, Mouse, Rat
Clonality	Polyclonal
Recommended application	WB, IHC-p, ELISA
Concentration	1 mg/ml
Full name	Coronin 1A Antibody
Synonyms	CORO1A; CORO1; Coronin-1A; Coronin-like protein A; Clipin-A; Coronin-like protein p57; Tryptophan aspartate-containing coat protein; TACO

This product is for research use only, not for use in human, therapeutic or diagnostic procedure.

Background

CORO1A encodes a member of the WD repeat protein family. WD repeats are minimally conserved regions of approximately 40 amino acids typically bracketed by gly-his and trp-asp (GH-WD), which may facilitate formation of heterotrimeric or multiprotein complexes. Members of this family are involved in a variety of cellular processes, including cell cycle progression, signal transduction, apoptosis, and gene regulation. Alternative splicing results in multiple transcript variants. A related pseudogene has been defined on chromosome 16.

Recommended Dilution

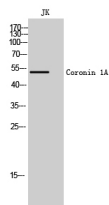
WB: 1: 500 - 1: 2000

IHC: 1: 100 - 1: 300

ELISA: 1: 40000

Not yet tested in other applications.

Images



Western Blot analysis of JK cells using Coronin 1A Polyclonal Antibody

Storage

-20°C for one year