

Cortactin (Acetyl Lys235) Polyclonal Antibody

Description

Product type	Primary Antibody
Code	BT-AP02136
Host	Rabbit
Isotype	IgG
Size	20ul, 50ul, 100ul
Immunogen	Synthesized acetyl-peptide derived from the Internal region of human Cortactin around the acetylation site of K235.
Mol wt	61636
Species reactivity	Human, Mouse, Rat
Clonality	Polyclonal
Recommended application	WB, ELISA
Concentration	1 mg/ml
Full name	Cortactin (Acetyl Lys235) Antibody
Synonyms	CTTN; EMS1; Src substrate cortactin; Amplixin; Oncogene EMS1

This product is for research use only, not for use in human, therapeutic or diagnostic procedure.

Background

CTTN is overexpressed in breast cancer and squamous cell carcinomas of the head and neck. Cortactin is localized in the cytoplasm and in areas of the cell-substratum contacts. This gene has two roles: (1) regulating the interactions between components of adherens-type junctions and (2) organizing the cytoskeleton and cell adhesion structures of epithelia and carcinoma cells. During apoptosis, cortactin is degraded in a caspase-dependent manner. The aberrant regulation of CTTN contributes to tumor cell invasion and metastasis. Three splice variants that encode different isoforms have been identified for CTTN.

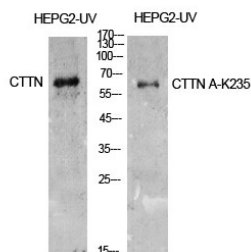
Recommended Dilution

WB: 1: 500 - 1: 2000

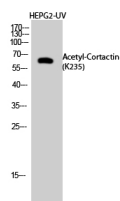
ELISA: 1: 10000

Not yet tested in other applications.

Images



Western Blot analysis of HepG2-UV cells using Acetyl-Cortactin (K235) Polyclonal Antibody. Antibody was diluted at 1:500. Secondary antibody was diluted at 1:20000



Western Blot analysis of HepG2-UV cells using Acetyl-Cortactin (K235) Polyclonal Antibody diluted at 1:500. Secondary antibody was diluted at 1:20000

Storage

-20°C for one year

501 Changsheng S Rd, Nanhu Dist, Jiaxing, Zhejiang, China

Tel: 86 21 31007137 | E-mail: save@bt-laboratory.com | www.bt-laboratory.com