

## Cortactin Polyclonal Antibody

### Description

<b>Product type</b>	Primary Antibody
<b>Code</b>	BT-AP02138
<b>Host</b>	Rabbit
<b>Isotype</b>	IgG
<b>Size</b>	20ul, 50ul, 100ul
<b>Immunogen</b>	The antiserum was produced against synthesized peptide derived from human Cortactin. AA range:388-437
<b>Mol wt</b>	61636
<b>Species reactivity</b>	Human, Mouse, Rat
<b>Clonality</b>	Polyclonal
<b>Recommended application</b>	WB, IHC-p, ELISA
<b>Concentration</b>	1 mg/ml
<b>Full name</b>	Cortactin Antibody
<b>Synonyms</b>	CTTN; EMS1; Src substrate cortactin; Amplaxin; Oncogene EMS1

**This product is for research use only, not for use in human, therapeutic or diagnostic procedure.**

### Background

Cortactin, encoded by CTTN gene (formerly EMS1), was originally identified as a substrate of the Src kinase. It is a cytoskeletal protein that interacts with F-actin and Arp2/3 complex and plays an important role in regulation of actin assembly and cytoskeleton dynamics. Overexpression of cortactin increases cell migration, and is thought to contribute to the invasive phenotype of breast cancer and several other tumors. Three isoforms of cortactin exist due to the alternative splicing.

### Recommended Dilution

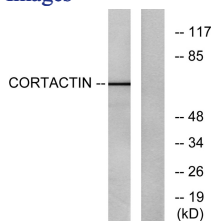
WB: 1: 500 - 1: 2000

IHC: 1: 100 - 1: 300

ELISA: 1: 20000

Not yet tested in other applications.

### Images



Western blot analysis of lysates from HeLa cells, treated with H<sub>2</sub>O<sub>2</sub>, using Cortactin Antibody. The lane on the right is blocked with the synthesized peptide.

### Storage

-20°C for one year